

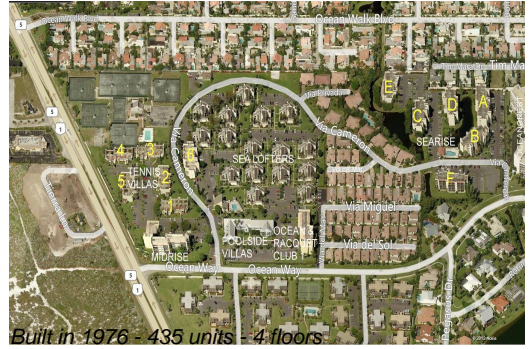
# Unit Sea Lofters B-8 - Jupiter Ocean & Racquet Club

Sea Lofters B-8 - 1605 S US Hwy 1, Jupiter, FL, Palm Beach 33477

## Unit Information

MLS Number:	RX-10996815
Status:	Active
Size:	740 Sq ft.
Bedrooms:	1
Full Bathrooms:	1
Half Bathrooms:	0
Parking Spaces:	Assigned
View:	City,Garden
List Price:	\$335,000
List PPSF:	\$453
Valuated Price:	\$329,000
Valuated PPSF:	\$445

The above valuated price is a baseline figure that does not take into account any specific renovation, upgrade, split, merge, or deterioration of the unit.



## Building Information

Number of units:	435
Number of active listings for rent:	0
Number of active listings for sale:	19
Building inventory for sale:	4%
Number of sales over the last 12 months:	21
Number of sales over the last 6 months:	11
Number of sales over the last 3 months:	6

## Building Association Information

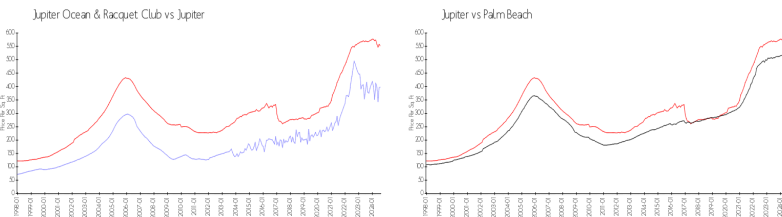
Jupiter Ocean & Racquet Club Association Address: 1605 U.S. 1,  
Jupiter, FL 33477  
Phone:(561) 747-5331

<http://jorcinc.net/site/>

## Recent Sales

Unit #	Size	Closing Date	Sale Price	PPSF
D101	1,183 sq ft	Sep 2024	\$475,000	\$402
A204	860 sq ft	Sep 2024	\$370,000	\$430
1a	740 sq ft	Aug 2024	\$322,500	\$436
6b	740 sq ft	Aug 2024	\$335,000	\$453
F304	860 sq ft	Jul 2024	\$360,000	\$419

## Market Information



Jupiter Ocean & Racquet Club:	\$398/sq. ft.	Jupiter:	\$551/sq. ft.
Jupiter:	\$551/sq. ft.	Palm Beach:	\$472/sq. ft.

## Inventory for Sale

Jupiter Ocean & Racquet Club	4%
Jupiter	3%
Palm Beach	3%

**Avg. Time to Close Over Last 12 Months**

Jupiter Ocean & Racquet Club	61 days
Jupiter	67 days
Palm Beach	58 days