

Unit 605 Mainsail Cir - Sea Colony

605 Mainsail Cir - 101-1909 Mainsail Cir, Jupiter, FL, Palm Beach 33477

Unit Information

MLS Number: RX-10997314
 Status: Active
 Size: 1,624 Sq ft.
 Bedrooms: 2
 Full Bathrooms: 2
 Half Bathrooms: 0
 Parking Spaces: Garage - Attached, Vehicle Restrictions
 View: Garden, Ocean
 Rental Price: \$5,000
 List PPSF: \$3
 Valuated Price: \$770,000
 Valuated PPSF: \$474

The above valuated price is a baseline figure that does not take into account any specific renovation, upgrade, split, merge, or deterioration of the unit.

Building Information

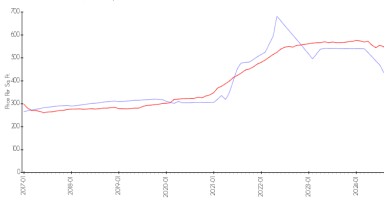
Number of units: 171
 Number of active listings for rent: 0
 Number of active listings for sale: 3
 Building inventory for sale: 1%
 Number of sales over the last 12 months: 5
 Number of sales over the last 6 months: 2
 Number of sales over the last 3 months: 1

Building Association Information

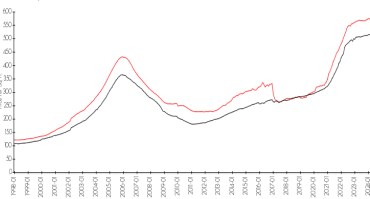
Sea Colony Community Association
 Address: 1910 Mainsail Cir,
 Jupiter, FL 33477
 Phone: +1 561-743-5411

Market Information

Sea Colony vs Jupiter



Jupiter vs Palm Beach



Sea Colony: \$434/sq. ft.
 Jupiter: \$548/sq. ft.

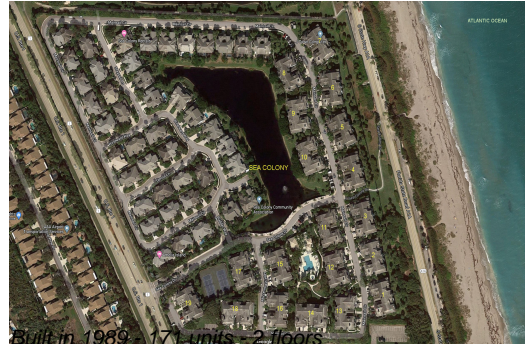
Jupiter: \$548/sq. ft.
 Palm Beach: \$472/sq. ft.

Inventory for Sale

Sea Colony 2%
 Jupiter 3%
 Palm Beach 3%

Avg. Time to Close Over Last 12 Months

Sea Colony 60 days
 Jupiter 67 days
 Palm Beach 58 days



Built in 1989 - 171 units - 2 floors