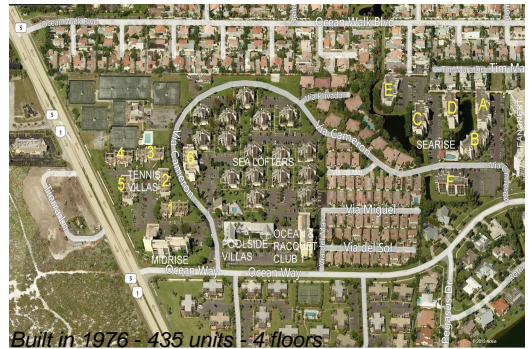


Unit 1-401 - Jupiter Ocean & Racquet Club

1-401 - 1605 S US Hwy 1, Jupiter, FL, Palm Beach 33477

Unit Information

MLS Number:	RX-11000151
Status:	Active
Size:	1,800 Sq ft.
Bedrooms:	3
Full Bathrooms:	3
Half Bathrooms:	0
Parking Spaces:	Assigned, Carport - Attached
View:	
Rental Price:	\$5,000
List PPSF:	\$3
Valuated Price:	\$560,000
Valuated PPSF:	\$311



The above valuated price is a baseline figure that does not take into account any specific renovation, upgrade, split, merge, or deterioration of the unit.

Building Information

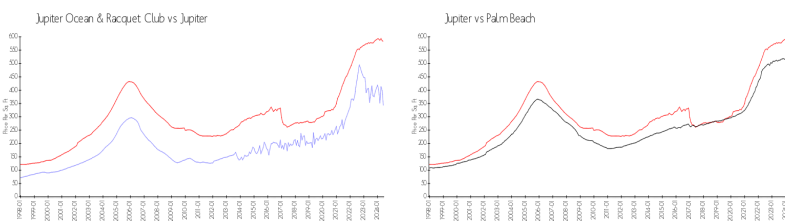
Number of units:	435
Number of active listings for rent:	0
Number of active listings for sale:	16
Building inventory for sale:	3%
Number of sales over the last 12 months:	20
Number of sales over the last 6 months:	10
Number of sales over the last 3 months:	4

Building Association Information

Jupiter Ocean & Racquet Club Association Address: 1605 U.S. 1,
Jupiter, FL 33477
Phone: (561) 747-5331

<http://jorcinc.net/site/>

Market Information



Jupiter Ocean & Racquet Club:	\$344/sq. ft.	Jupiter:	\$582/sq. ft.
Jupiter:	\$582/sq. ft.	Palm Beach:	\$474/sq. ft.

Inventory for Sale

Jupiter Ocean & Racquet Club	4%
Jupiter	3%
Palm Beach	3%

Avg. Time to Close Over Last 12 Months

Jupiter Ocean & Racquet Club	63 days
Jupiter	68 days
Palm Beach	58 days