

Unit 3-E - Norton Park Place

3-E - 1501 S Flagler Dr, West Palm Beach, FL, Palm Beach 33401

Unit Information

MLS Number: RX-11000525
 Status: Pending
 Size: 1,230 Sq ft.
 Bedrooms: 2
 Full Bathrooms: 2
 Half Bathrooms: 0
 Parking Spaces: Under Building
 View: Intracoastal, Pool
 Rental Price: \$3,000
 List PPSF: \$2
 Valuated Price: \$680,000
 Valuated PPSF: \$553

The above valuated price is a baseline figure that does not take into account any specific renovation, upgrade, split, merge, or deterioration of the unit.

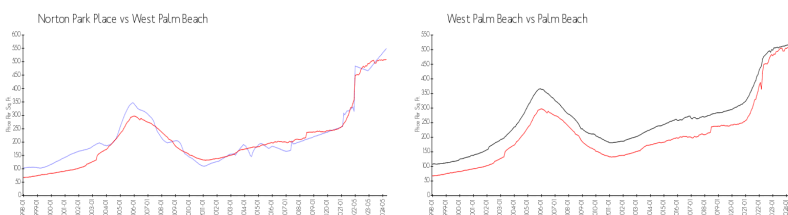
Building Information

Number of units: 64
 Number of active listings for rent: 1
 Number of active listings for sale: 3
 Building inventory for sale: 4%
 Number of sales over the last 12 months: 0
 Number of sales over the last 6 months: 0
 Number of sales over the last 3 months: 0

Building Association Information

Norton Park Place Condominium Association, Inc.
 1501 S Flagler Dr, West Palm Beach,
 FL 33401
 (561) 659-0117

Market Information



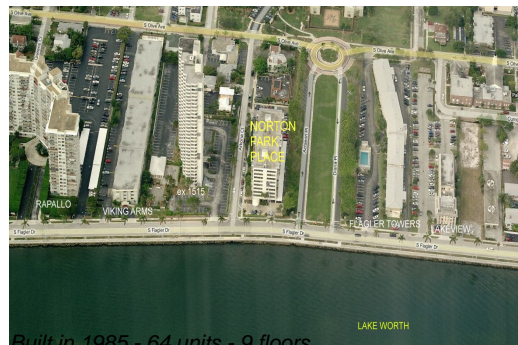
Norton Park Place: \$549/sq. ft.
 West Palm Beach: \$509/sq. ft.
 West Palm Beach: \$509/sq. ft.
 Palm Beach: \$471/sq. ft.

Inventory for Sale

Norton Park Place: 5%
 West Palm Beach: 4%
 Palm Beach: 3%

Avg. Time to Close Over Last 12 Months

Norton Park Place: 46 days
 West Palm Beach: 56 days
 Palm Beach: 59 days



Built in 1985 - 64 units - 9 floors