

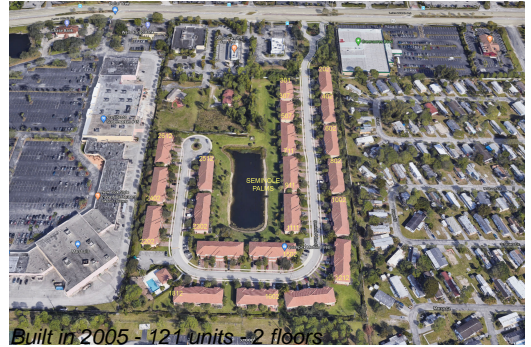
Unit 2210 Seminole Palms Dr - Seminole Palms

2210 Seminole Palms Dr - 202-2612 Seminole Palms Dr, Greenacres, FL, Palm Beach 33463

Unit Information

MLS Number: RX-11000889
 Status: Active
 Size: 1,837 Sq ft.
 Bedrooms: 2
 Full Bathrooms: 2
 Half Bathrooms: 1
 Parking Spaces:
 View:
 List Price: \$375,000
 List PPSF: \$204
 Valuated Price: \$338,000
 Valuated PPSF: \$224

The above valuated price is a baseline figure that does not take into account any specific renovation, upgrade, split, merge, or deterioration of the unit.



Building Information

Number of units: 121
 Number of active listings for rent: 0
 Number of active listings for sale: 1
 Building inventory for sale: 0%
 Number of sales over the last 12 months: 3
 Number of sales over the last 6 months: 2
 Number of sales over the last 3 months: 1

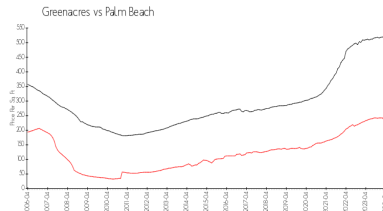
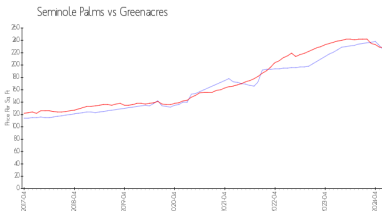
Building Association Information

Seminole Palms Homeowners Association
 Address 2010 Seminole Palms Dr
 Greenacres, Florida 33463
 Phone +1 561-439-2660

Recent Sales

Unit #	Size	Closing Date	Sale Price	PPSF
	1,958 sq ft	Jun 2024	\$370,000	\$189
1204	1,507 sq ft	Apr 2024	\$359,000	\$238
	1,837 sq ft	Aug 2023	\$345,000	\$188

Market Information



Seminole Palms: \$224/sq. ft.
 Greenacres: \$228/sq. ft.
 Greenacres: \$228/sq. ft.
 Palm Beach: \$474/sq. ft.

Inventory for Sale

Seminole Palms 1%
 Greenacres 1%
 Palm Beach 3%

Avg. Time to Close Over Last 12 Months

Seminole Palms	15 days
Greenacres	29 days
Palm Beach	58 days