

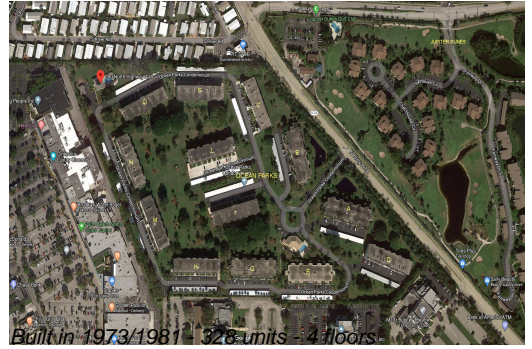
Unit 303F - Ocean Parks (A to O)

303F - 300 N Highway A1A, Jupiter, FL, Palm Beach 33477

Unit Information

MLS Number:	RX-11001235
Status:	Active
Size:	1,936 Sq ft.
Bedrooms:	3
Full Bathrooms:	3
Half Bathrooms:	0
Parking Spaces:	Carport - Detached, Guest
View:	Garden
List Price:	\$699,000
List PPSF:	\$361
Valuated Price:	\$555,000
Valuated PPSF:	\$287

The above valuated price is a baseline figure that does not take into account any specific renovation, upgrade, split, merge, or deterioration of the unit.



Building Information

Number of units:	328
Number of active listings for rent:	0
Number of active listings for sale:	15
Building inventory for sale:	4%
Number of sales over the last 12 months:	15
Number of sales over the last 6 months:	9
Number of sales over the last 3 months:	2

Building Association Information

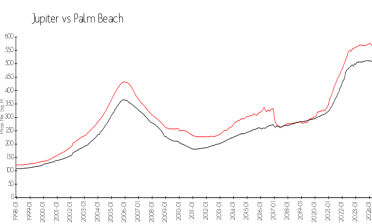
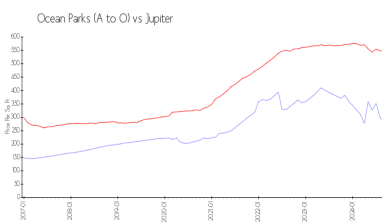
Ocean Parks Office
 300 N. Ocean Blvd (Hwy. A1A)
 Jupiter, FL 33477-9510
 (561) 744-0668
 (561) 575-2874 (fax)

<https://www.oceanparks.com/>

Recent Sales

Unit #	Size	Closing Date	Sale Price	PPSF
404m	1,520 sq ft	Sep 2024	\$340,000	\$224
103e	1,807 sq ft	Aug 2024	\$500,000	\$277
203g	1,355 sq ft	Jul 2024	\$474,000	\$350
305c	1,230 sq ft	Jun 2024	\$405,000	\$329
406f	1,936 sq ft	May 2024	\$760,000	\$393
305o	1,620 sq ft	May 2024	\$415,000	\$256
105 E	1,807 sq ft	May 2024	\$796,000	\$441
106i	1,936 sq ft	May 2024	\$780,000	\$403
302m	1,520 sq ft	May 2024	\$380,000	\$250

Market Information



Ocean Parks (A to O):	\$285/sq. ft.	Jupiter:	\$545/sq. ft.
Jupiter:	\$545/sq. ft.	Palm Beach:	\$467/sq. ft.

Inventory for Sale

Ocean Parks (A to O)	5%
Jupiter	3%
Palm Beach	3%

Avg. Time to Close Over Last 12 Months

Ocean Parks (A to O)	74 days
Jupiter	71 days
Palm Beach	60 days