

Unit 12-F - Sabal Ridge

12-F - 101 Sabal Ridge Ct, Palm Beach Gardens, FL, Palm Beach 33418

Unit Information

MLS Number: RX-11001683
 Status: Active
 Size: 1,200 Sq ft.
 Bedrooms: 2
 Full Bathrooms: 2
 Half Bathrooms: 0
 Parking Spaces: 2+ Spaces,Assigned,Guest
 View: Garden
 List Price: \$329,000
 List PPSF: \$274
 Valuated Price: \$321,000
 Valuated PPSF: \$268

The above valuated price is a baseline figure that does not take into account any specific renovation, upgrade, split, merge, or deterioration of the unit.

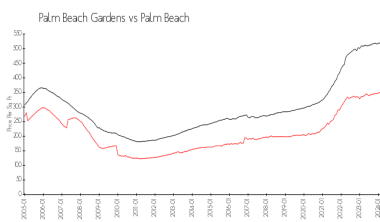
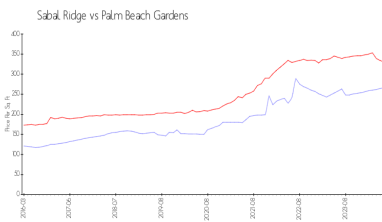
Building Information

Number of units: 184
 Number of active listings for rent: 0
 Number of active listings for sale: 6
 Building inventory for sale: 3%
 Number of sales over the last 12 months: 11
 Number of sales over the last 6 months: 6
 Number of sales over the last 3 months: 1

Recent Sales

Unit #	Size	Closing Date	Sale Price	PPSF
E	1,400 sq ft	Jun 2024	\$375,000	\$268
F	1,200 sq ft	Apr 2024	\$270,000	\$225
H	1,400 sq ft	Mar 2024	\$351,000	\$251
H	1,400 sq ft	Mar 2024	\$359,000	\$256
B	1,200 sq ft	Feb 2024	\$360,000	\$300
C	1,200 sq ft	Feb 2024	\$355,000	\$296

Market Information



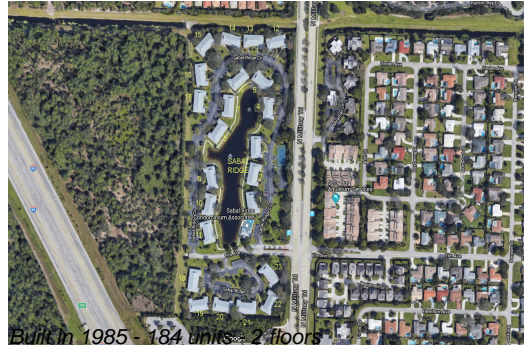
Sabal Ridge:	\$267/sq. ft.	Palm Beach	\$330/sq. ft.
Palm Beach	\$330/sq. ft.	Gardens:	\$474/sq. ft.
Gardens:		Palm Beach:	

Inventory for Sale

Sabal Ridge 3%
 Palm Beach Gardens 3%
 Palm Beach 3%

Avg. Time to Close Over Last 12 Months

Sabal Ridge 24 days
 Palm Beach Gardens 49 days
 Palm Beach 58 days



Built in 1985 - 184 units - 2 floors