

# Unit 1510 - Slade

1510 - 1551 N Flagler Dr, West Palm Beach, FL, Palm Beach 33401

## Unit Information

MLS Number: RX-11002205  
 Status: Active  
 Size: 824 Sq ft.  
 Bedrooms: 1  
 Full Bathrooms: 1  
 Half Bathrooms: 0  
 Parking Spaces: Assigned, Garage - Attached, Garage - Building, Vehicle Restrictions  
 View: City  
 List Price: \$355,000  
 List PPSF: \$431  
 Valuated Price: \$386,000  
 Valuated PPSF: \$508

*The above valuated price is a baseline figure that does not take into account any specific renovation, upgrade, split, merge, or deterioration of the unit.*

## Building Information

Number of units: 199  
 Number of active listings for rent: 10  
 Number of active listings for sale: 18  
 Building inventory for sale: 9%  
 Number of sales over the last 12 months: 12  
 Number of sales over the last 6 months: 9  
 Number of sales over the last 3 months: 3

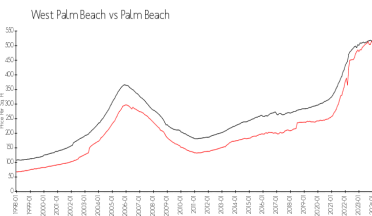
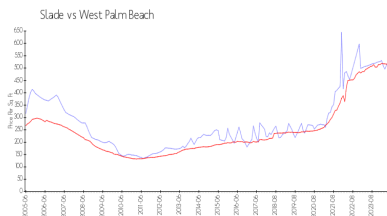
## Building Association Information

The Slade Condo Association  
 561-653-8230

## Recent Sales

Unit #	Size	Closing Date	Sale Price	PPSF
1401	1,680 sq ft	May 2024	\$1,150,000	\$685
912	933 sq ft	May 2024	\$400,000	\$429
Ph 9	760 sq ft	May 2024	\$300,000	\$395
818	1,400 sq ft	Apr 2024	\$850,000	\$607
1405	1,175 sq ft	Apr 2024	\$555,000	\$472
802	1,175 sq ft	Apr 2024	\$550,000	\$468

## Market Information

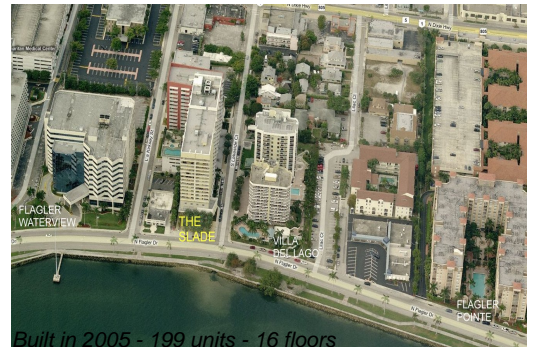


Slade: \$526/sq. ft.  
 West Palm Beach: \$516/sq. ft.

West Palm Beach: \$516/sq. ft.  
 Palm Beach: \$474/sq. ft.

## Inventory for Sale

Slade 9%  
 West Palm Beach 3%  
 Palm Beach 3%



## **Avg. Time to Close Over Last 12 Months**

Slade	80 days
West Palm Beach	54 days
Palm Beach	58 days