

Unit 4503 Mediterranean Cir - Trevi at the Gardens

4503 Mediterranean Cir - 4503-4683 Mediterranean Cir, Palm Beach Gardens, FL, Palm Beach 33418

Unit Information

MLS Number:	RX-11003011
Status:	Active
Size:	2,560 Sq ft.
Bedrooms:	3
Full Bathrooms:	3
Half Bathrooms:	1
Parking Spaces:	Driveway,Garage - Attached
View:	Garden
List Price:	\$635,000
List PPSF:	\$248
Valuated Price:	\$631,000
Valuated PPSF:	\$319

The above valuated price is a baseline figure that does not take into account any specific renovation, upgrade, split, merge, or deterioration of the unit.

Building Information

Number of units:	75
Number of active listings for rent:	0
Number of active listings for sale:	7
Building inventory for sale:	9%
Number of sales over the last 12 months:	2
Number of sales over the last 6 months:	2
Number of sales over the last 3 months:	2

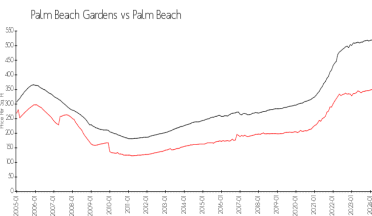
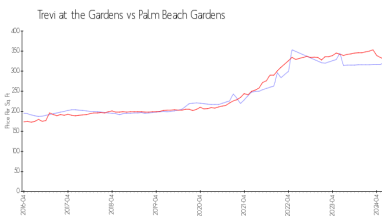
Building Association Information

Trevi at the Gardens HOA
 Address 4580 Mediterranean Cir
 Palm Beach Gardens, FL33418
 Phone +1 561-249-0489

Recent Sales

Unit #	Size	Closing Date	Sale Price	PPSF
	2,227 sq ft	Jun 2024	\$549,900	\$247
	2,227 sq ft	May 2024	\$548,500	\$246

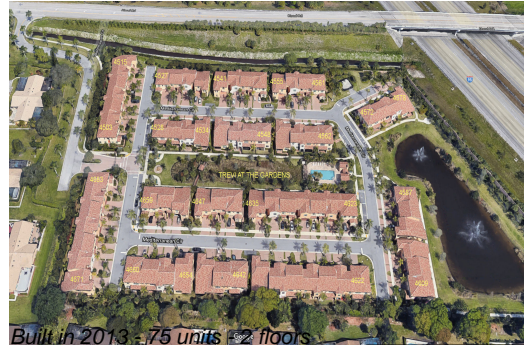
Market Information



Trevi at the Gardens:	\$320/sq. ft.	Palm Beach	\$330/sq. ft.
Palm Beach	\$330/sq. ft.	Gardens:	
Gardens:		Palm Beach:	\$474/sq. ft.

Inventory for Sale

Trevi at the Gardens	9%
Palm Beach Gardens	3%
Palm Beach	3%



Avg. Time to Close Over Last 12 Months

Trevi at the Gardens	49 days
Palm Beach Gardens	49 days
Palm Beach	58 days