

Unit Sea Rise A-105 - Jupiter Ocean & Racquet Club

Sea Rise A-105 - 1605 S US Hwy 1, Jupiter, FL, Palm Beach 33477

Unit Information

MLS Number:	RX-11003188
Status:	Active
Size:	860 Sq ft.
Bedrooms:	1
Full Bathrooms:	1
Half Bathrooms:	1
Parking Spaces:	Assigned,Guest,Vehicle Restrictions
View:	Lake
List Price:	\$370,000
List PPSF:	\$430
Valuated Price:	\$355,000
Valuated PPSF:	\$413

The above valuated price is a baseline figure that does not take into account any specific renovation, upgrade, split, merge, or deterioration of the unit.

Building Information

Number of units:	435
Number of active listings for rent:	0
Number of active listings for sale:	19
Building inventory for sale:	4%
Number of sales over the last 12 months:	21
Number of sales over the last 6 months:	9
Number of sales over the last 3 months:	5

Building Association Information

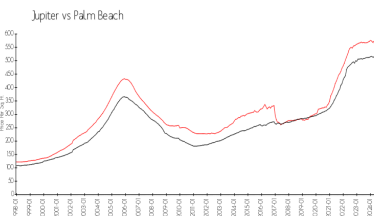
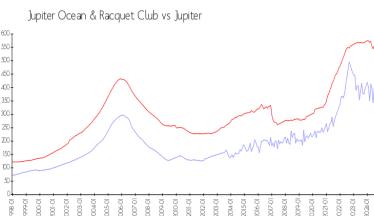
Jupiter Ocean & Racquet Club Association
 Address: 1605 U.S. 1,
 Jupiter, FL 33477
 Phone:(561) 747-5331

<http://jorcinc.net/site/>

Recent Sales

Unit #	Size	Closing Date	Sale Price	PPSF
D101	1,183 sq ft	Sep 2024	\$475,000	\$402
A204	860 sq ft	Sep 2024	\$370,000	\$430
1a	740 sq ft	Aug 2024	\$322,500	\$436
6b	740 sq ft	Aug 2024	\$335,000	\$453
F304	860 sq ft	Jul 2024	\$360,000	\$419

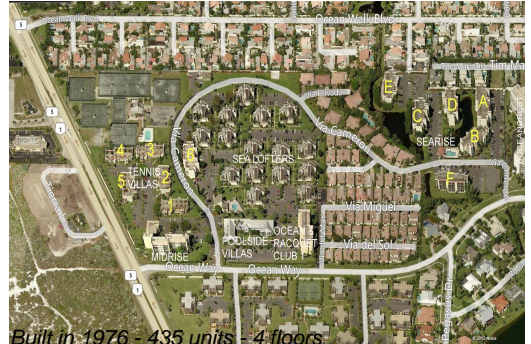
Market Information



Jupiter Ocean & Racquet Club:	\$398/sq. ft.	Jupiter:	\$548/sq. ft.
Jupiter:	\$548/sq. ft.	Palm Beach:	\$471/sq. ft.

Inventory for Sale

Jupiter Ocean & Racquet Club	4%
Jupiter	3%
Palm Beach	3%



Built in 1976 - 435 units - 4 floors

Avg. Time to Close Over Last 12 Months

Jupiter Ocean & Racquet Club	63 days
Jupiter	68 days
Palm Beach	59 days