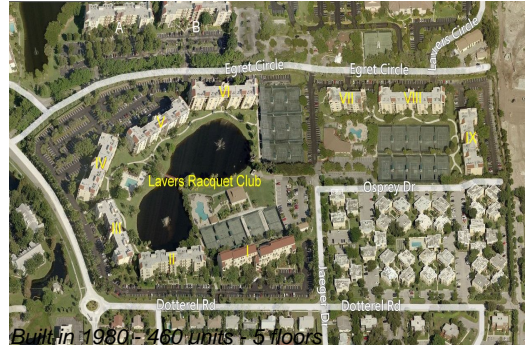


# Unit 7205 - Lavers Delray Racquet Club I to IX

7205 - 950 Egret Cir, Delray Beach, FL, Palm Beach 33444

## Unit Information

MLS Number:	RX-11004326
Status:	Active
Size:	1,290 Sq ft.
Bedrooms:	2
Full Bathrooms:	2
Half Bathrooms:	0
Parking Spaces:	Assigned,Guest
View:	Clubhouse,Other
Rental Price:	\$2,900
List PPSF:	\$2
Valuated Price:	\$332,000
Valuated PPSF:	\$257



*The above valuated price is a baseline figure that does not take into account any specific renovation, upgrade, split, merge, or deterioration of the unit.*

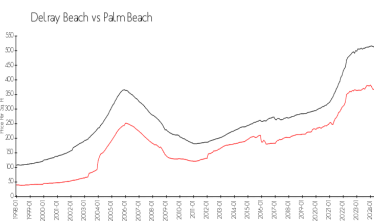
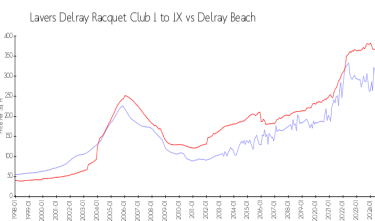
## Building Information

Number of units:	460
Number of active listings for rent:	16
Number of active listings for sale:	13
Building inventory for sale:	2%
Number of sales over the last 12 months:	18
Number of sales over the last 6 months:	9
Number of sales over the last 3 months:	2

## Building Association Information

Lavers Of Delray Racquet Club,  
 Delray Racquet Club Association, Inc  
 610 Egret Circle  
 Delray Beach, FL 33444-7930  
 (561) 276-3792

## Market Information



Lavers Delray Racquet Club I to IX:	\$266/sq. ft.	Delray Beach:	\$366/sq. ft.
Delray Beach:	\$366/sq. ft.	Palm Beach:	\$472/sq. ft.

## Inventory for Sale

Lavers Delray Racquet Club I to IX	3%
Delray Beach	2%
Palm Beach	3%

## Avg. Time to Close Over Last 12 Months

Lavers Delray Racquet Club I to IX	77 days
Delray Beach	54 days
Palm Beach	58 days