

Unit 2400 SW 22nd Ave # 503 - Sabal Pine

2400 SW 22nd Ave # 503 - 2300 SW 22 Ave, Delray Beach, FL, Palm Beach 33445

Unit Information

MLS Number: RX-11005832
Status: Active
Size: 1,013 Sq ft.
Bedrooms: 2
Full Bathrooms: 2
Half Bathrooms: 0
Parking Spaces: Assigned, Guest
View: Garden
List Price: \$150,000
List PPSF: \$148
Valuated Price: \$165,000
Valuated PPSF: \$163

The above valuated price is a baseline figure that does not take into account any specific renovation, upgrade, split, merge, or deterioration of the unit.

Building Information

Number of units: 255
Number of active listings for rent: 0
Number of active listings for sale: 7
Building inventory for sale: 2%
Number of sales over the last 12 months: 3
Number of sales over the last 6 months: 1
Number of sales over the last 3 months: 0

Building Association Information

SABAL PINE ASSOCIATION, INC.
Florida One Management
9825 Marina Blvd. Suite 100
Boca Raton, FL 33428
Phone: 561-488-4802
Fax: 561-488-4420

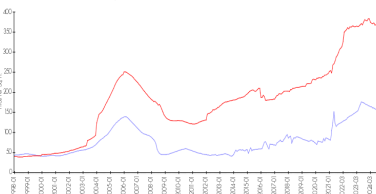
<http://www.sabalpine.com/>

Recent Sales

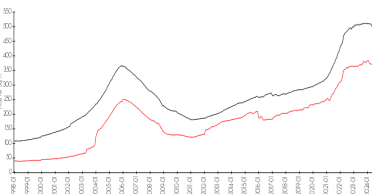
Unit #	Size	Closing Date	Sale Price	PPSF
1203	1,013 sq ft	May 2024	\$158,000	\$156
703	1,013 sq ft	Apr 2024	\$205,000	\$202
312	1,013 sq ft	Feb 2024	\$199,000	\$196

Market Information

Sabal Pine vs Delray Beach



Delray Beach vs Palm Beach

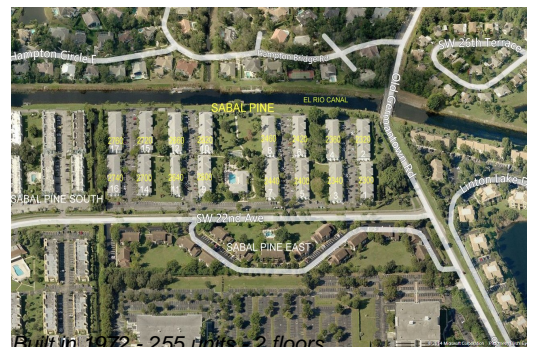


Sabal Pine:	\$156/sq. ft.	Delray Beach:	\$365/sq. ft.
Delray Beach:	\$365/sq. ft.	Palm Beach:	\$466/sq. ft.

Inventory for Sale

Sabal Pine	3%
Delray Beach	3%
Palm Beach	4%

Avg. Time to Close Over Last 12 Months



Built in 1972 - 255 units - 2 floors

Sabal Pine
Delray Beach
Palm Beach

34 days
56 days
60 days