

Unit 105 Mainsail Cir - Sea Colony

105 Mainsail Cir - 101-1909 Mainsail Cir, Jupiter, FL, Palm Beach 33477

Unit Information

MLS Number: RX-11007962
 Status: Active
 Size: 1,624 Sq ft.
 Bedrooms: 2
 Full Bathrooms: 2
 Half Bathrooms: 0
 Parking Spaces: Driveway, Garage - Attached, Guest
 View: Garden, Ocean
 Rental Price: \$8,750
 List PPSF: \$5
 Valuated Price: \$847,000
 Valuated PPSF: \$522

The above valuated price is a baseline figure that does not take into account any specific renovation, upgrade, split, merge, or deterioration of the unit.

Building Information

Number of units: 171
 Number of active listings for rent: 0
 Number of active listings for sale: 4
 Building inventory for sale: 2%
 Number of sales over the last 12 months: 5
 Number of sales over the last 6 months: 1
 Number of sales over the last 3 months: 1

Building Association Information

Sea Colony Community Association
 Address: 1910 Mainsail Cir,
 Jupiter, FL 33477
 Phone: +1 561-743-5411

Market Information



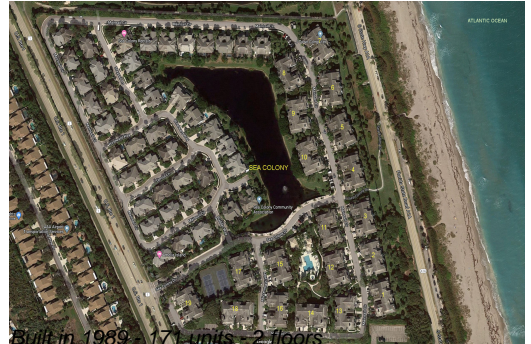
Sea Colony: \$477/sq. ft.
 Jupiter: \$545/sq. ft.
 Jupiter: \$545/sq. ft.
 Palm Beach: \$466/sq. ft.

Inventory for Sale

Sea Colony: 2%
 Jupiter: 3%
 Palm Beach: 4%

Avg. Time to Close Over Last 12 Months

Sea Colony: 55 days
 Jupiter: 71 days
 Palm Beach: 60 days



Built in 1989 - 171 units - 2 floors