

Unit A-501 - Park Place (at Lakes Condos A&B)

A-501 - 1610 Presidential Wy, West Palm Beach, FL, Palm Beach 33401

Unit Information

MLS Number:	RX-11009924
Status:	Active
Size:	3,060 Sq ft.
Bedrooms:	4
Full Bathrooms:	3
Half Bathrooms:	1
Parking Spaces:	2+ Spaces,Assigned,Guest
View:	City,Golf
List Price:	\$777,000
List PPSF:	\$254
Valuated Price:	\$534,000
Valuated PPSF:	\$188

The above valuated price is a baseline figure that does not take into account any specific renovation, upgrade, split, merge, or deterioration of the unit.

Building Information

Number of units:	99
Number of active listings for rent:	0
Number of active listings for sale:	9
Building inventory for sale:	9%
Number of sales over the last 12 months:	5
Number of sales over the last 6 months:	3
Number of sales over the last 3 months:	1

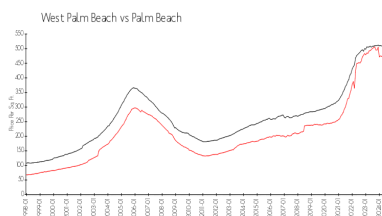
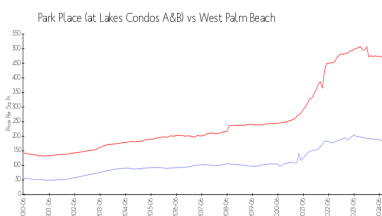
Building Association Information

Park Place At Lakes Condominium
1600 Presidential Way
West Palm Beach, FL 33401
Phone: (561) 478-0015

Recent Sales

Unit #	Size	Closing Date	Sale Price	PPSF
A104	1,638 sq ft	Sep 2024	\$295,000	\$180
108	1,798 sq ft	Aug 2024	\$285,000	\$159
303 B	1,638 sq ft	Jun 2024	\$309,000	\$189
107	1,638 sq ft	Mar 2024	\$305,000	\$186
303	1,424 sq ft	Jan 2024	\$295,000	\$207

Market Information

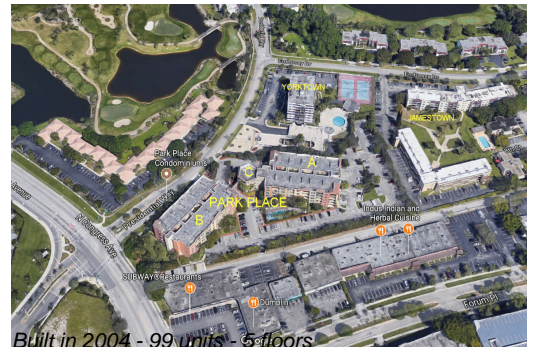


Park Place (at Lakes Condos A&B):	West Palm Beach:	\$470/sq. ft.
West Palm Beach:	Palm Beach:	\$466/sq. ft.

Inventory for Sale

Park Place (at Lakes Condos A&B)	9%
West Palm Beach	4%
Palm Beach	4%

Avg. Time to Close Over Last 12 Months



Park Place (at Lakes Condos A&B)	89 days
West Palm Beach	55 days
Palm Beach	61 days