

Unit Sea Rise F-305 - Jupiter Ocean & Racquet Club

Sea Rise F-305 - 1605 S US Hwy 1, Jupiter, FL, Palm Beach 33477

Unit Information

MLS Number:	RX-11013062
Status:	Pending
Size:	860 Sq ft.
Bedrooms:	1
Full Bathrooms:	1
Half Bathrooms:	1
Parking Spaces:	Assigned,Guest
View:	Pond
Rental Price:	\$1,900
List PPSF:	\$2
Valuated Price:	\$319,000
Valuated PPSF:	\$371

The above valuated price is a baseline figure that does not take into account any specific renovation, upgrade, split, merge, or deterioration of the unit.

Building Information

Number of units:	435
Number of active listings for rent:	0
Number of active listings for sale:	22
Building inventory for sale:	5%
Number of sales over the last 12 months:	17
Number of sales over the last 6 months:	6
Number of sales over the last 3 months:	2

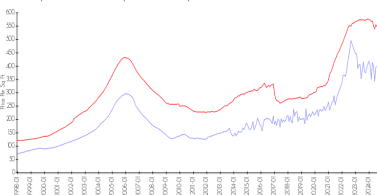
Building Association Information

Jupiter Ocean & Racquet Club AssociationAddress: 1605 U.S. 1,
Jupiter, FL 33477
Phone:(561) 747-5331

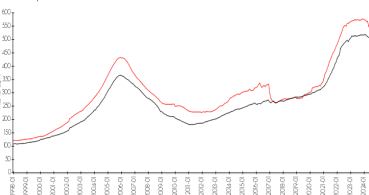
<http://jorcinc.net/site/>

Market Information

Jupiter Ocean & Racquet Club vs Jupiter



Jupiter vs Palm Beach



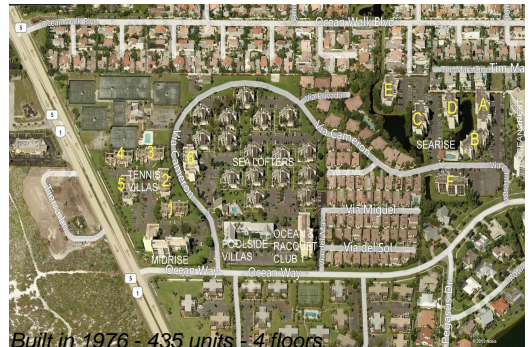
Jupiter Ocean & Racquet Club:	\$350/sq. ft.	Jupiter:	\$528/sq. ft.
Jupiter:	\$528/sq. ft.	Palm Beach:	\$467/sq. ft.

Inventory for Sale

Jupiter Ocean & Racquet Club	5%
Jupiter	4%
Palm Beach	4%

Avg. Time to Close Over Last 12 Months

Jupiter Ocean & Racquet Club	78 days
Jupiter	68 days
Palm Beach	61 days



Built in 1976 - 435 units - 4 floors