

Unit Sea Rise F-104 - Jupiter Ocean & Racquet Club

Sea Rise F-104 - 1605 S US Hwy 1, Jupiter, FL, Palm Beach 33477

Unit Information

MLS Number: RX-11014321
 Status: Active
 Size: 860 Sq ft.
 Bedrooms: 1
 Full Bathrooms: 1
 Half Bathrooms: 1
 Parking Spaces: Assigned, Vehicle Restrictions
 View: Canal, Garden
 List Price: \$395,000
 List PPSF: \$459
 Valuated Price: \$356,000
 Valuated PPSF: \$414

The above valuated price is a baseline figure that does not take into account any specific renovation, upgrade, split, merge, or deterioration of the unit.

Building Information

Number of units: 435
 Number of active listings for rent: 0
 Number of active listings for sale: 21
 Building inventory for sale: 4%
 Number of sales over the last 12 months: 17
 Number of sales over the last 6 months: 7
 Number of sales over the last 3 months: 3

Building Association Information

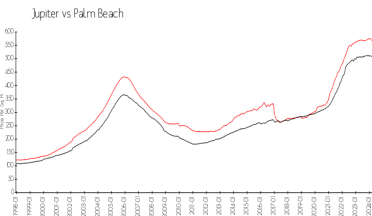
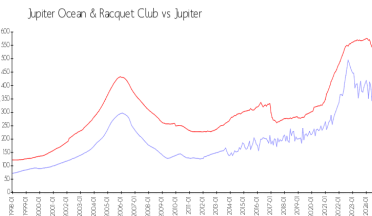
Jupiter Ocean & Racquet Club Association Address: 1605 U.S. 1,
 Jupiter, FL 33477
 Phone: (561) 747-5331

<http://jorcinc.net/site/>

Recent Sales

Unit #	Size	Closing Date	Sale Price	PPSF
D101	1,183 sq ft	Sep 2024	\$475,000	\$402
A204	860 sq ft	Sep 2024	\$370,000	\$430
1a	740 sq ft	Aug 2024	\$322,500	\$436
6b	740 sq ft	Aug 2024	\$335,000	\$453
F304	860 sq ft	Jul 2024	\$360,000	\$419

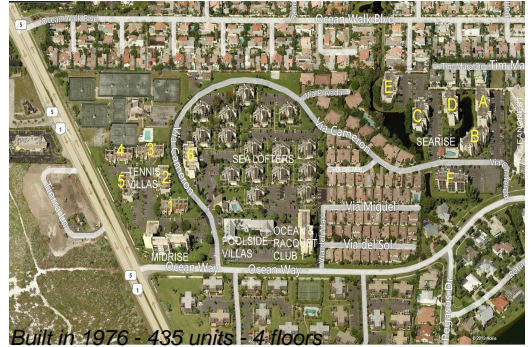
Market Information



Jupiter Ocean & Racquet Club:	\$399/sq. ft.	Jupiter:	\$545/sq. ft.
Jupiter:	\$545/sq. ft.	Palm Beach:	\$466/sq. ft.

Inventory for Sale

Jupiter Ocean & Racquet Club	5%
Jupiter	3%
Palm Beach	4%



Avg. Time to Close Over Last 12 Months

Jupiter Ocean & Racquet Club	67 days
Jupiter	71 days
Palm Beach	60 days