

# Unit Sea Rise A-107 - Jupiter Ocean & Racquet Club

Sea Rise A-107 - 1605 S US Hwy 1, Jupiter, FL, Palm Beach 33477

## Unit Information

MLS Number:	RX-11014763
Status:	Active Under Contract
Size:	860 Sq ft.
Bedrooms:	1
Full Bathrooms:	1
Half Bathrooms:	1
Parking Spaces:	Assigned,Guest,Open
View:	Pond
Rental Price:	\$2,400
List PPSF:	\$3
Valuated Price:	\$312,000
Valuated PPSF:	\$363

*The above valuated price is a baseline figure that does not take into account any specific renovation, upgrade, split, merge, or deterioration of the unit.*

## Building Information

Number of units:	435
Number of active listings for rent:	0
Number of active listings for sale:	22
Building inventory for sale:	5%
Number of sales over the last 12 months:	17
Number of sales over the last 6 months:	6
Number of sales over the last 3 months:	2

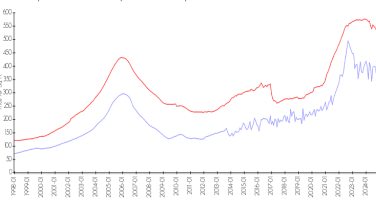
## Building Association Information

Jupiter Ocean & Racquet Club Association  
 Address: 1605 U.S. 1,  
 Jupiter, FL 33477  
 Phone:(561) 747-5331

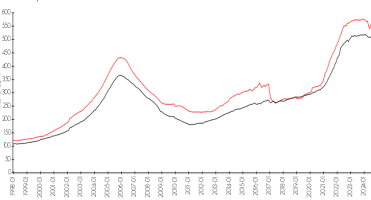
<http://jorcinc.net/site/>

## Market Information

Jupiter Ocean & Racquet Club vs Jupiter



Jupiter vs Palm Beach



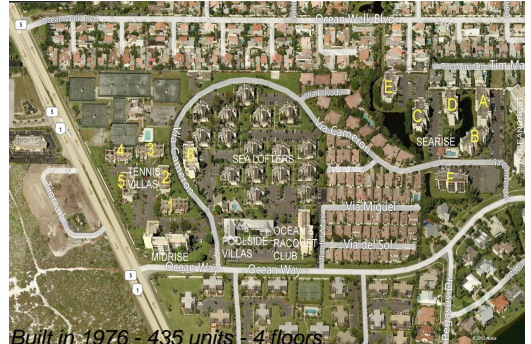
Jupiter Ocean & Racquet Club:	\$350/sq. ft.	Jupiter:	\$528/sq. ft.
Jupiter:	\$528/sq. ft.	Palm Beach:	\$467/sq. ft.

## Inventory for Sale

Jupiter Ocean & Racquet Club	5%
Jupiter	4%
Palm Beach	4%

## Avg. Time to Close Over Last 12 Months

Jupiter Ocean & Racquet Club	78 days
Jupiter	68 days
Palm Beach	61 days



Built in 1976 - 435 units - 4 floors