

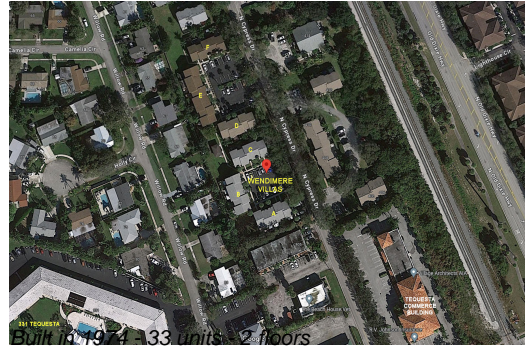
Unit 411 N Cypress Dr # 15C - Wendimere Villas

411 N Cypress Dr # 15C - 407 N Cypress Dr, Jupiter, FL, Palm Beach 33469

Unit Information

MLS Number:	RX-11017242
Status:	Active
Size:	1,024 Sq ft.
Bedrooms:	2
Full Bathrooms:	1
Half Bathrooms:	1
Parking Spaces:	Assigned, Guest
View:	Other
List Price:	\$296,000
List PPSF:	\$289
Valuated Price:	\$281,000
Valuated PPSF:	\$274

The above valuated price is a baseline figure that does not take into account any specific renovation, upgrade, split, merge, or deterioration of the unit.



Building Information

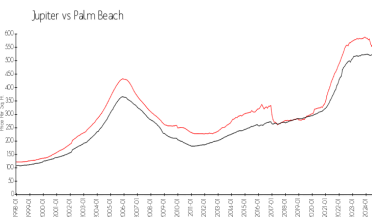
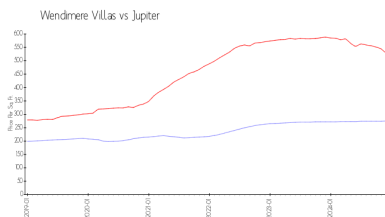
Number of units:	33
Number of active listings for rent:	0
Number of active listings for sale:	1
Building inventory for sale:	3%
Number of sales over the last 12 months:	0
Number of sales over the last 6 months:	0
Number of sales over the last 3 months:	0

Building Association Information

Windemere Owners Association
 FirstService Residential
 2950 North 28th Terrace
 Hollywood, Florida 33020

<https://www.fsresidential.com/florida/news-events/press-releases/firstservice-re>

Market Information



Wendimere Villas:	\$275/sq. ft.	Jupiter:	\$527/sq. ft.
Jupiter:	\$527/sq. ft.	Palm Beach:	\$464/sq. ft.

Inventory for Sale

Wendimere Villas	3%
Jupiter	4%
Palm Beach	4%

Avg. Time to Close Over Last 12 Months

Wendimere Villas	n/a
Jupiter	74 days
Palm Beach	62 days