

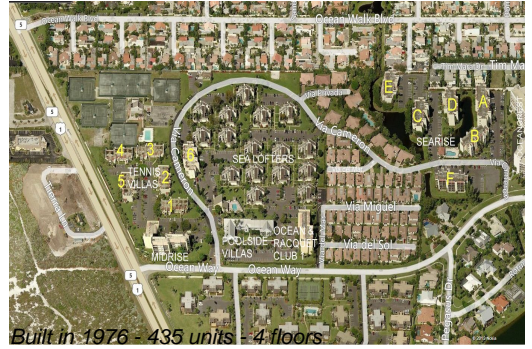
Unit Sea Lofters E-10 - Jupiter Ocean & Racquet Club

Sea Lofters E-10 - 1605 S US Hwy 1, Jupiter, FL, Palm Beach 33477

Unit Information

MLS Number:	RX-11017589
Status:	Active
Size:	1,160 Sq ft.
Bedrooms:	2
Full Bathrooms:	2
Half Bathrooms:	0
Parking Spaces:	Assigned,Guest
View:	Garden
List Price:	\$539,000
List PPSF:	\$465
Valuated Price:	\$459,000
Valuated PPSF:	\$396

The above valuated price is a baseline figure that does not take into account any specific renovation, upgrade, split, merge, or deterioration of the unit.



Building Information

Number of units:	435
Number of active listings for rent:	0
Number of active listings for sale:	23
Building inventory for sale:	5%
Number of sales over the last 12 months:	17
Number of sales over the last 6 months:	7
Number of sales over the last 3 months:	3

Building Association Information

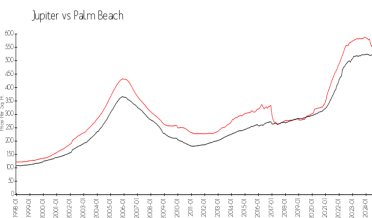
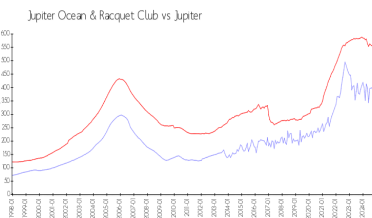
Jupiter Ocean & Racquet Club Association Address: 1605 U.S. 1,
Jupiter, FL 33477
Phone:(561) 747-5331

<http://jorcinc.net/site/>

Recent Sales

Unit #	Size	Closing Date	Sale Price	PPSF
F406	1,183 sq ft	Jan 2025	\$550,000	\$465
8b	740 sq ft	Dec 2024	\$256,000	\$346
10g	1,650 sq ft	Dec 2024	\$517,000	\$313
D101	1,183 sq ft	Sep 2024	\$475,000	\$402
A204	860 sq ft	Sep 2024	\$370,000	\$430

Market Information



Jupiter Ocean & Racquet Club:	\$355/sq. ft.	Jupiter:	\$527/sq. ft.
Jupiter:	\$527/sq. ft.	Palm Beach:	\$464/sq. ft.

Inventory for Sale

Jupiter Ocean & Racquet Club	5%
Jupiter	4%
Palm Beach	4%

Avg. Time to Close Over Last 12 Months

Jupiter Ocean & Racquet Club	89 days
Jupiter	75 days
Palm Beach	62 days