

Unit 11019 Legacy Ln # 101 - Residences at Legacy Place

11019 Legacy Ln # 101 - 11011-11023 Legacy Ln, Palm Beach Gardens, FL, Palm Beach 33410

Unit Information

MLS Number:	RX-11018668
Status:	Active
Size:	1,454 Sq ft.
Bedrooms:	3
Full Bathrooms:	2
Half Bathrooms:	1
Parking Spaces:	Garage - Attached
View:	Other
List Price:	\$425,000
List PPSF:	\$292
Valuated Price:	\$413,000
Valuated PPSF:	\$284

The above valuated price is a baseline figure that does not take into account any specific renovation, upgrade, split, merge, or deterioration of the unit.

Building Information

Number of units:	384
Number of active listings for rent:	0
Number of active listings for sale:	10
Building inventory for sale:	2%
Number of sales over the last 12 months:	2
Number of sales over the last 6 months:	0
Number of sales over the last 3 months:	0

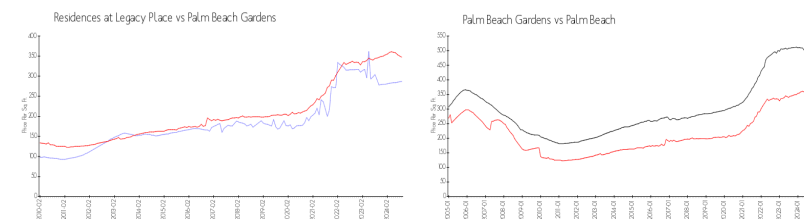
Building Association Information

The Residences At Legacy Place
11000 Legacy Pl
Palm Beach Gardens, FL 33410
(561) 626-1609

Recent Sales

Unit #	Size	Closing Date	Sale Price	PPSF
104	1,345 sq ft	Mar 2024	\$420,000	\$312
303	900 sq ft	Dec 2023	\$300,000	\$333

Market Information

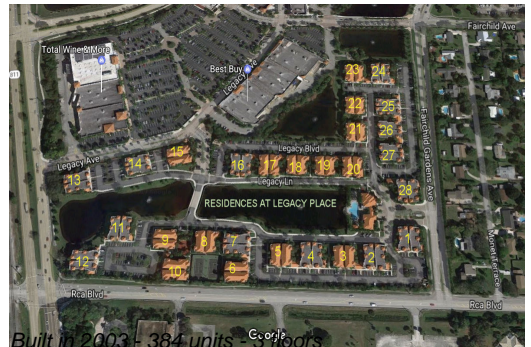


Residences at Legacy Place:	\$287/sq. ft.	Palm Beach Gardens:	\$347/sq. ft.
Palm Beach Gardens:	\$347/sq. ft.	Palm Beach:	\$466/sq. ft.

Inventory for Sale

Residences at Legacy Place	3%
Palm Beach Gardens	3%
Palm Beach	4%

Avg. Time to Close Over Last 12 Months



Residences at Legacy Place	54 days
Palm Beach Gardens	52 days
Palm Beach	60 days