

Unit 1900 N Congress Ave # 208 - Presidential Golfview

1900 N Congress Ave # 208 - 1700 N Congress Ave, West Palm Beach, FL, Palm Beach 33401

Unit Information

MLS Number: RX-11019988
 Status: Active
 Size: 775 Sq ft.
 Bedrooms: 1
 Full Bathrooms: 1
 Half Bathrooms: 0
 Parking Spaces: 2+ Spaces
 View:
 Rental Price: \$1,400
 List PPSF: \$2
 Valuated Price: \$137,000
 Valuated PPSF: \$177

The above valuated price is a baseline figure that does not take into account any specific renovation, upgrade, split, merge, or deterioration of the unit.

Building Information

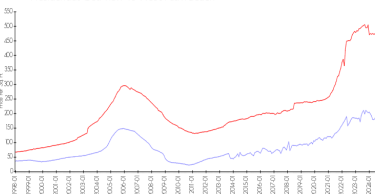
Number of units: 436
 Number of active listings for rent: 0
 Number of active listings for sale: 14
 Building inventory for sale: 3%
 Number of sales over the last 12 months: 15
 Number of sales over the last 6 months: 5
 Number of sales over the last 3 months: 0

Building Association Information

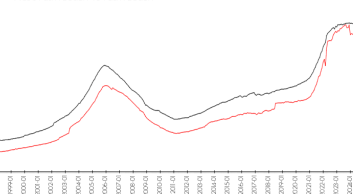
Presidential Golfview Condo
 West Palm Beach, FL 33401
 1700 N Congress Ave Apt A,
 (561) 684-7725
 1720 N Congress Ave Apt A,
 (561) 471-0981
 1750 N Congress Ave,
 (561) 688-0892
 1820 N Congress Ave Apt A,
 (561) 686-6342
 1850 N Congress Ave,
 (561) 686-1077
 1860 N Congress Ave
 (561) 686-4948
 1900 S Congress Ave Ste A,
 (561) 683-7512
 2000 N Congress Ave # A,
 (561) 684-1531

Market Information

Presidential Golfview vs West Palm Beach

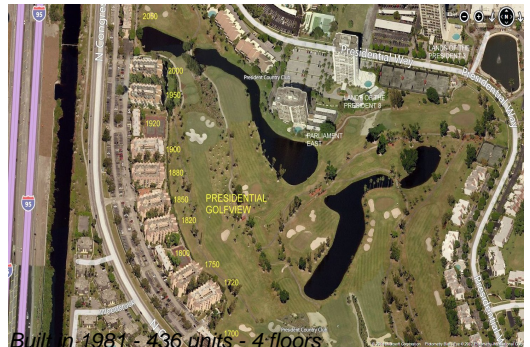


West Palm Beach vs Palm Beach



Presidential
 Golfview: \$177/sq. ft.
 West Palm Beach: \$470/sq. ft.

West Palm Beach: \$470/sq. ft.
 Palm Beach: \$466/sq. ft.



Inventory for Sale

Presidential Golfview	3%
West Palm Beach	4%
Palm Beach	4%

Avg. Time to Close Over Last 12 Months

Presidential Golfview	37 days
West Palm Beach	55 days
Palm Beach	61 days