

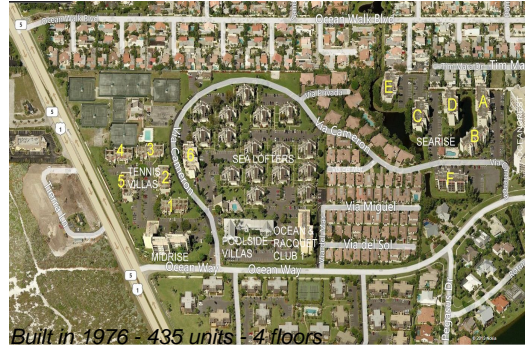
# Unit 1-403 - Jupiter Ocean & Racquet Club

1-403 - 1605 S US Hwy 1, Jupiter, FL, Palm Beach 33477

## Unit Information

MLS Number: RX-11023586  
 Status: Active  
 Size: 1,500 Sq ft.  
 Bedrooms: 2  
 Full Bathrooms: 2  
 Half Bathrooms: 0  
 Parking Spaces: Assigned, Guest  
 View: Other  
 Rental Price: \$6,500  
 List PPSF: \$4  
 Valuated Price: \$481,000  
 Valuated PPSF: \$321

*The above valuated price is a baseline figure that does not take into account any specific renovation, upgrade, split, merge, or deterioration of the unit.*



## Building Information

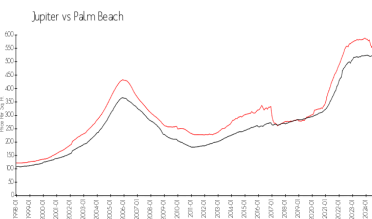
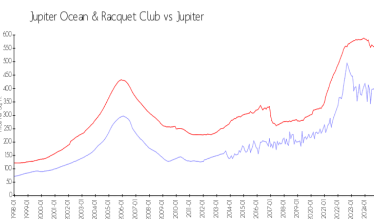
Number of units: 435  
 Number of active listings for rent: 0  
 Number of active listings for sale: 22  
 Building inventory for sale: 5%  
 Number of sales over the last 12 months: 17  
 Number of sales over the last 6 months: 7  
 Number of sales over the last 3 months: 3

## Building Association Information

Jupiter Ocean & Racquet Club Association Address: 1605 U.S. 1,  
 Jupiter, FL 33477  
 Phone: (561) 747-5331

<http://jorcinc.net/site/>

## Market Information



Jupiter Ocean & Racquet Club:	\$355/sq. ft.	Jupiter:	\$527/sq. ft.
Jupiter:	\$527/sq. ft.	Palm Beach:	\$464/sq. ft.

## Inventory for Sale

Jupiter Ocean & Racquet Club: 5%  
 Jupiter: 4%  
 Palm Beach: 4%

## Avg. Time to Close Over Last 12 Months

Jupiter Ocean & Racquet Club: 89 days  
 Jupiter: 74 days  
 Palm Beach: 62 days