

Unit 303E - Ocean Parks (A to O)

303E - 300 N Highway A1A, Jupiter, FL, Palm Beach 33477

Unit Information

MLS Number: RX-11025432
 Status: Active
 Size: 1,240 Sq ft.
 Bedrooms: 2
 Full Bathrooms: 2
 Half Bathrooms: 0
 Parking Spaces: Assigned, Carport - Detached, Covered, Guest
 View: Clubhouse, Garden, Pool
 List Price: \$650,000
 List PPSF: \$524
 Valuated Price: \$382,000
 Valuated PPSF: \$308

The above valuated price is a baseline figure that does not take into account any specific renovation, upgrade, split, merge, or deterioration of the unit.

Building Information

Number of units: 328
 Number of active listings for rent: 0
 Number of active listings for sale: 16
 Building inventory for sale: 4%
 Number of sales over the last 12 months: 13
 Number of sales over the last 6 months: 4
 Number of sales over the last 3 months: 2

Building Association Information

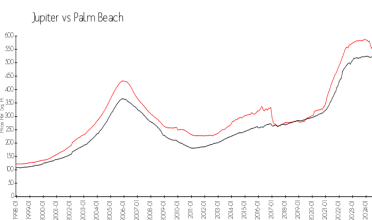
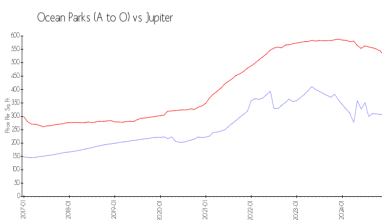
Ocean Parks Office
 300 N. Ocean Blvd (Hwy. A1A)
 Jupiter, FL 33477-9510
 (561) 744-0668
 (561) 575-2874 (fax)

<https://www.oceanparks.com/>

Recent Sales

Unit #	Size	Closing Date	Sale Price	PPSF
303f	1,936 sq ft	Dec 2024	\$635,000	\$328
101a	1,240 sq ft	Dec 2024	\$350,000	\$282
404m	1,520 sq ft	Sep 2024	\$340,000	\$224
103e	1,807 sq ft	Aug 2024	\$500,000	\$277
203g	1,355 sq ft	Jul 2024	\$474,000	\$350

Market Information

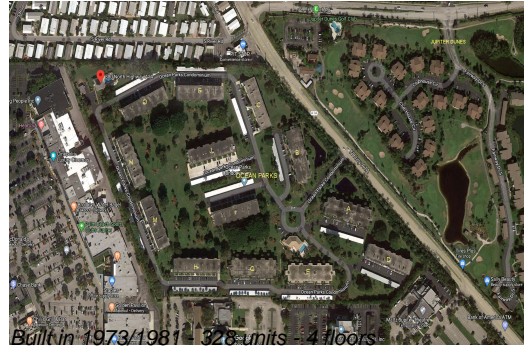


Ocean Parks (A to O): \$306/sq. ft.
 Jupiter: \$527/sq. ft.

Jupiter: \$527/sq. ft.
 Palm Beach: \$465/sq. ft.

Inventory for Sale

Ocean Parks (A to O) 5%
 Jupiter 4%



Palm Beach 4%

Avg. Time to Close Over Last 12 Months

Ocean Parks (A to O)	67 days
Jupiter	75 days
Palm Beach	62 days