

Unit 9102 - Lavers Delray Racquet Club I to IX

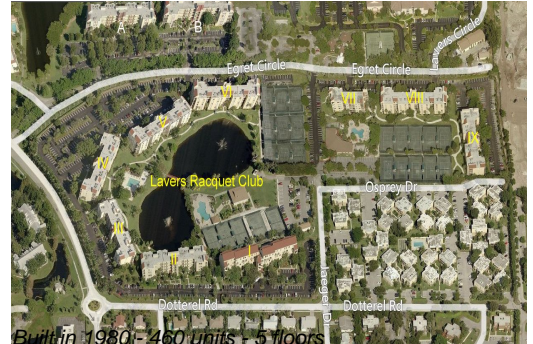
9102 - 950 Egret Cir, Delray Beach, FL, Palm Beach 33444



Unit Information

MLS Number: RX-11026641
 Status: Active
 Size: 1,420 Sq ft.
 Bedrooms: 2
 Full Bathrooms: 2
 Half Bathrooms: 0
 Parking Spaces: Assigned, Guest
 View: Garden
 Rental Price: \$5,200
 List PPSF: \$4
 Valuated Price: \$328,000
 Valuated PPSF: \$254

The above valuated price is a baseline figure that does not take into account any specific renovation, upgrade, split, merge, or deterioration of the unit.



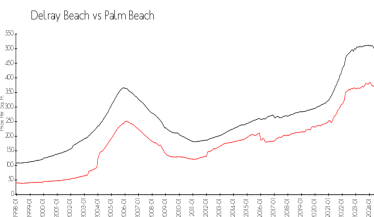
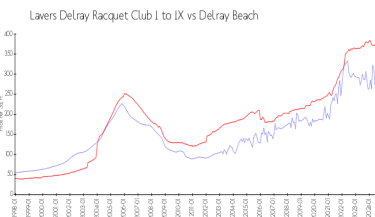
Building Information

Number of units: 460
 Number of active listings for rent: 16
 Number of active listings for sale: 13
 Building inventory for sale: 2%
 Number of sales over the last 12 months: 19
 Number of sales over the last 6 months: 10
 Number of sales over the last 3 months: 4

Building Association Information

Lavers Of Delray Racquet Club,
 Delray Racquet Club Association, Inc
 610 Egret Circle
 Delray Beach, FL 33444-7930
 (561) 276-3792

Market Information



Lavers Delray Racquet Club I to IX:	\$266/sq. ft.	Delray Beach:	\$365/sq. ft.
Delray Beach:	\$365/sq. ft.	Palm Beach:	\$466/sq. ft.

Inventory for Sale

Lavers Delray Racquet Club I to IX	3%
Delray Beach	3%
Palm Beach	4%

Avg. Time to Close Over Last 12 Months

Lavers Delray Racquet Club I to IX	80 days
Delray Beach	56 days
Palm Beach	60 days