

Unit 11024 Legacy Dr # 102 - Residences at Legacy Place

11024 Legacy Dr # 102 - 11011-11023 Legacy Ln, Palm Beach Gardens, FL, Palm Beach 33410

Unit Information

MLS Number:	RX-11027132
Status:	Active
Size:	1,051 Sq ft.
Bedrooms:	1
Full Bathrooms:	1
Half Bathrooms:	0
Parking Spaces:	2+ Spaces
View:	Lake
List Price:	\$359,900
List PPSF:	\$342
Valuated Price:	\$298,000
Valuated PPSF:	\$284

The above valuated price is a baseline figure that does not take into account any specific renovation, upgrade, split, merge, or deterioration of the unit.

Building Information

Number of units:	384
Number of active listings for rent:	0
Number of active listings for sale:	8
Building inventory for sale:	2%
Number of sales over the last 12 months:	2
Number of sales over the last 6 months:	0
Number of sales over the last 3 months:	0

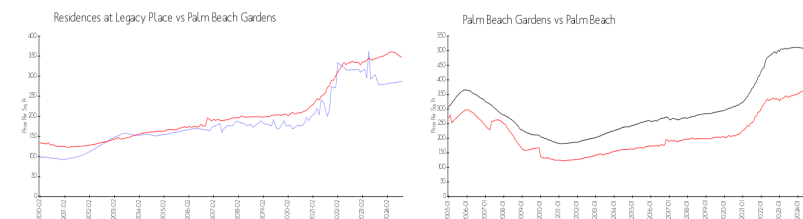
Building Association Information

The Residences At Legacy Place
11000 Legacy Pl
Palm Beach Gardens, FL 33410
(561) 626-1609

Recent Sales

Unit #	Size	Closing Date	Sale Price	PPSF
104	1,345 sq ft	Mar 2024	\$420,000	\$312
303	900 sq ft	Dec 2023	\$300,000	\$333

Market Information

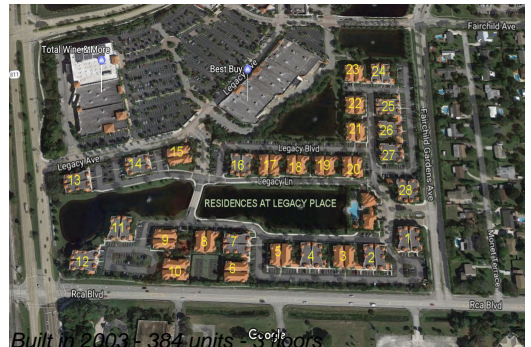


Residences at Legacy Place:	\$287/sq. ft.	Palm Beach Gardens:	\$347/sq. ft.
Palm Beach Gardens:	\$347/sq. ft.	Palm Beach:	\$466/sq. ft.

Inventory for Sale

Residences at Legacy Place	2%
Palm Beach Gardens	3%
Palm Beach	4%

Avg. Time to Close Over Last 12 Months



Residences at Legacy Place	55 days
Palm Beach Gardens	53 days
Palm Beach	61 days