

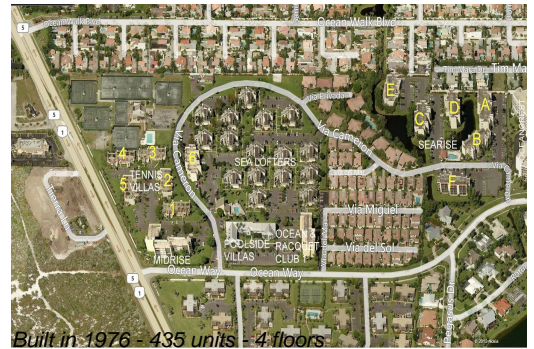
Unit Midrise M-1202 - Jupiter Ocean & Racquet Club

Midrise M-1202 - 1605 S US Hwy 1, Jupiter, FL, Palm Beach 33477

Unit Information

| | |
|-----------------|--------------|
| MLS Number: | RX-11028077 |
| Status: | Active |
| Size: | 1,500 Sq ft. |
| Bedrooms: | 2 |
| Full Bathrooms: | 2 |
| Half Bathrooms: | 0 |
| Parking Spaces: | Assigned |
| View: | Other |
| Rental Price: | \$5,000 |
| List PPSF: | \$3 |
| Valuated Price: | \$428,000 |
| Valuated PPSF: | \$285 |

The above valuated price is a baseline figure that does not take into account any specific renovation, upgrade, split, merge, or deterioration of the unit.



Building Information

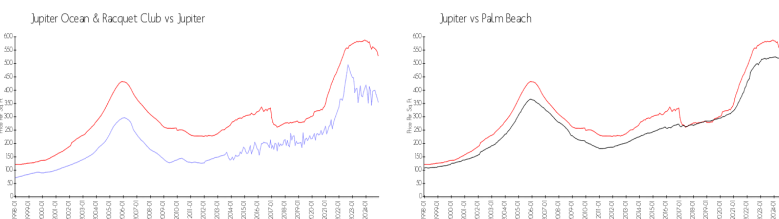
| | |
|--|-----|
| Number of units: | 435 |
| Number of active listings for rent: | 0 |
| Number of active listings for sale: | 22 |
| Building inventory for sale: | 5% |
| Number of sales over the last 12 months: | 17 |
| Number of sales over the last 6 months: | 7 |
| Number of sales over the last 3 months: | 3 |

Building Association Information

Jupiter Ocean & Racquet Club Association Address: 1605 U.S. 1,
Jupiter, FL 33477
Phone: (561) 747-5331

<http://jorcinc.net/site/>

Market Information



| | | | |
|-------------------------------|---------------|-------------|---------------|
| Jupiter Ocean & Racquet Club: | \$355/sq. ft. | Jupiter: | \$527/sq. ft. |
| Jupiter: | \$527/sq. ft. | Palm Beach: | \$464/sq. ft. |

Inventory for Sale

| | |
|------------------------------|----|
| Jupiter Ocean & Racquet Club | 5% |
| Jupiter | 4% |
| Palm Beach | 4% |

Avg. Time to Close Over Last 12 Months

| | |
|------------------------------|---------|
| Jupiter Ocean & Racquet Club | 89 days |
| Jupiter | 74 days |
| Palm Beach | 62 days |