

# Unit 16151 W Bay Dr # 161 - West Bay at Jonathan's Landing

16151 W Bay Dr # 161 - 3911-3971 Schooner Pointe Dr, Jupiter, FL, Palm Beach 33477

## Unit Information

MLS Number:	RX-11028445
Status:	Active
Size:	1,478 Sq ft.
Bedrooms:	2
Full Bathrooms:	2
Half Bathrooms:	0
Parking Spaces:	2+ Spaces,Garage - Attached
View:	
Rental Price:	\$8,500
List PPSF:	\$6
Valuated Price:	\$583,000
Valuated PPSF:	\$394

*The above valuated price is a baseline figure that does not take into account any specific renovation, upgrade, split, merge, or deterioration of the unit.*

## Building Information

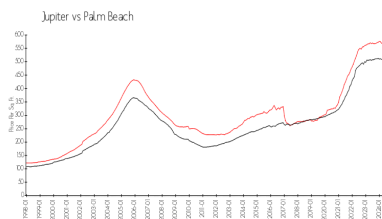
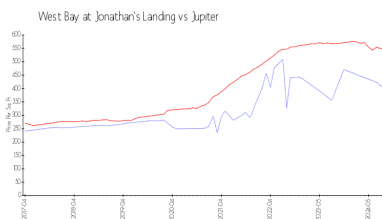
Number of units:	130
Number of active listings for rent:	0
Number of active listings for sale:	7
Building inventory for sale:	5%
Number of sales over the last 12 months:	9
Number of sales over the last 6 months:	4
Number of sales over the last 3 months:	0

## Building Association Information

Jonathan's Landing POA  
3755 Barrow Island Road  
Jupiter, FL 33477  
Office Phone: 561-743-2032  
Fax: 561-743-2062  
Email: admin@jlpoa.com

<https://jonathanslandingpoa.com/the-villages/west-bay>

## Market Information



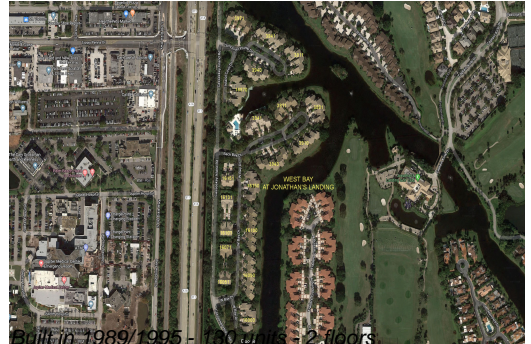
West Bay at Jonathan's Landing:	\$396/sq. ft.	Jupiter:	\$545/sq. ft.
Jupiter:	\$545/sq. ft.	Palm Beach:	\$466/sq. ft.

## Inventory for Sale

West Bay at Jonathan's Landing	5%
Jupiter	3%
Palm Beach	4%

## Avg. Time to Close Over Last 12 Months

West Bay at Jonathan's Landing	103 days
Jupiter	72 days



Palm Beach

60 days