

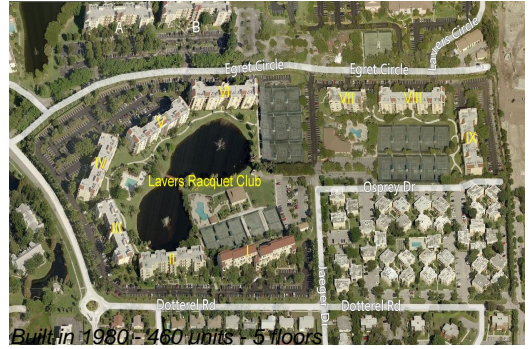
Unit 1104 - Lavers Delray Racquet Club I to IX

1104 - 950 Egret Cir, Delray Beach, FL, Palm Beach 33444

Unit Information

MLS Number:	RX-11030281
Status:	Active
Size:	1,175 Sq ft.
Bedrooms:	2
Full Bathrooms:	2
Half Bathrooms:	0
Parking Spaces:	
View:	
List Price:	\$298,000
List PPSF:	\$254
Valuated Price:	\$299,000
Valuated PPSF:	\$254

The above valuated price is a baseline figure that does not take into account any specific renovation, upgrade, split, merge, or deterioration of the unit.



Building Information

Number of units:	460
Number of active listings for rent:	16
Number of active listings for sale:	13
Building inventory for sale:	2%
Number of sales over the last 12 months:	19
Number of sales over the last 6 months:	10
Number of sales over the last 3 months:	4

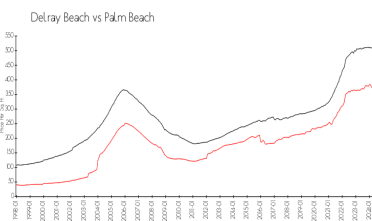
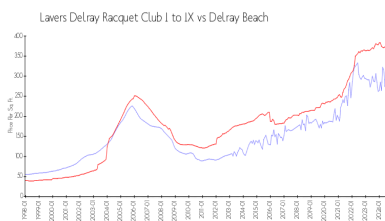
Building Association Information

Lavers Of Delray Racquet Club,
 Delray Racquet Club Association, Inc
 610 Egret Circle
 Delray Beach, FL 33444-7930
 (561) 276-3792

Recent Sales

Unit #	Size	Closing Date	Sale Price	PPSF
5509	1,300 sq ft	Nov 2024	\$340,000	\$262
2305	1,280 sq ft	Oct 2024	\$340,000	\$266
1303	1,175 sq ft	Oct 2024	\$275,000	\$234
6504	1,175 sq ft	Oct 2024	\$339,000	\$289
8303	1,175 sq ft	Aug 2024	\$305,000	\$260

Market Information



Lavers Delray Racquet Club I to IX:	\$266/sq. ft.	Delray Beach:	\$365/sq. ft.
Delray Beach:	\$365/sq. ft.	Palm Beach:	\$466/sq. ft.

Inventory for Sale

Lavers Delray Racquet Club I to IX	3%
Delray Beach	3%
Palm Beach	4%

Avg. Time to Close Over Last 12 Months

Lavers Delray Racquet Club I to IX	80 days
Delray Beach	56 days
Palm Beach	60 days