

Unit 409 - 200 East

409 - 200 E Palmetto Park Rd, Boca Raton, FL, Palm Beach 33432

Unit Information

MLS Number: RX-11030421
 Status: Active
 Size: 2,918 Sq ft.
 Bedrooms: 2
 Full Bathrooms: 2
 Half Bathrooms: 1
 Parking Spaces: 2+ Spaces, Assigned, Garage - Building, Guest
 View: Garden, Pool
 List Price: \$2,295,000
 List PPSF: \$786
 Valuated Price: \$1,661,000
 Valuated PPSF: \$823

The above valuated price is a baseline figure that does not take into account any specific renovation, upgrade, split, merge, or deterioration of the unit.

Building Information

Number of units: 115
 Number of active listings for rent: 1
 Number of active listings for sale: 6
 Building inventory for sale: 5%
 Number of sales over the last 12 months: 12
 Number of sales over the last 6 months: 3
 Number of sales over the last 3 months: 1

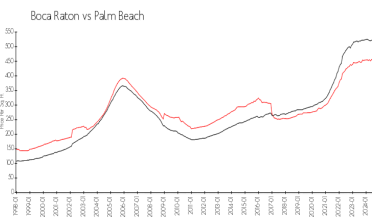
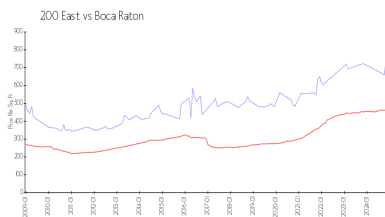
Building Association Information

200 East Palmetto Park Condominium Association, 200 E Palmetto Park Road
 Boca Raton, FL33432
 (561) 368-9045

Recent Sales

Unit #	Size	Closing Date	Sale Price	PPSF
817	3,229 sq ft	Nov 2024	\$1,980,000	\$613
Ph-11	4,854 sq ft	Oct 2024	\$3,990,000	\$822
512	2,265 sq ft	Aug 2024	\$1,600,000	\$706
508	2,251 sq ft	Jun 2024	\$1,925,000	\$855
802	2,168 sq ft	Apr 2024	\$1,599,000	\$738
401	3,518 sq ft	Apr 2024	\$1,525,000	\$433

Market Information



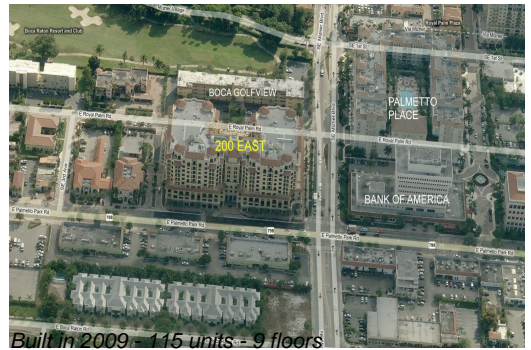
200 East: \$850/sq. ft. Boca Raton: \$465/sq. ft.
 Boca Raton: \$465/sq. ft. Palm Beach: \$464/sq. ft.

Inventory for Sale

200 East: 5%
 Boca Raton: 4%
 Palm Beach: 4%

Avg. Time to Close Over Last 12 Months

200 East: 57 days



Boca Raton
Palm Beach

62 days
62 days