

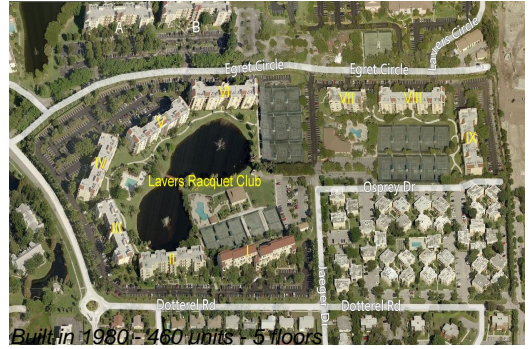
Unit 1304 - Lavers Delray Racquet Club I to IX

1304 - 950 Egret Cir, Delray Beach, FL, Palm Beach 33444

Unit Information

MLS Number:	RX-11030622
Status:	Pending
Size:	1,175 Sq ft.
Bedrooms:	2
Full Bathrooms:	2
Half Bathrooms:	0
Parking Spaces:	Assigned,Guest,Open
View:	Tennis
List Price:	\$250,000
List PPSF:	\$213
Valuated Price:	\$327,000
Valuated PPSF:	\$278

The above valuated price is a baseline figure that does not take into account any specific renovation, upgrade, split, merge, or deterioration of the unit.



Building Information

Number of units:	460
Number of active listings for rent:	16
Number of active listings for sale:	10
Building inventory for sale:	2%
Number of sales over the last 12 months:	22
Number of sales over the last 6 months:	11
Number of sales over the last 3 months:	7

Building Association Information

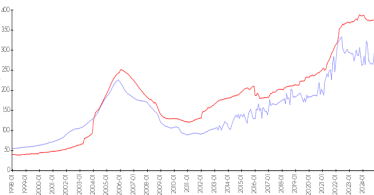
Lavers Of Delray Racquet Club,
 Delray Racquet Club Association, Inc
 610 Egret Circle
 Delray Beach, FL 33444-7930
 (561) 276-3792

Recent Sales

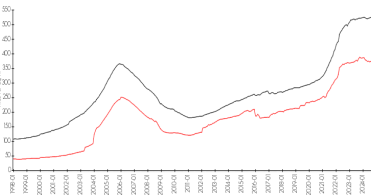
Unit #	Size	Closing Date	Sale Price	PPSF
3202	1,290 sq ft	Jan 2025	\$375,000	\$291
3204	1,175 sq ft	Jan 2025	\$355,000	\$302
8303	1,175 sq ft	Jan 2025	\$374,900	\$319
5401	758 sq ft	Jan 2025	\$192,500	\$254
6103	1,175 sq ft	Dec 2024	\$380,000	\$323
8209	1,175 sq ft	Dec 2024	\$282,500	\$240

Market Information

Lavers Delray Racquet Club I to IX vs Delray Beach



Delray Beach vs Palm Beach



Lavers Delray Racquet Club I to IX:	\$285/sq. ft.	Delray Beach:	\$371/sq. ft.
Delray Beach:	\$371/sq. ft.	Palm Beach:	\$465/sq. ft.

Inventory for Sale

Lavers Delray Racquet Club I to IX	2%
Delray Beach	3%
Palm Beach	4%

Avg. Time to Close Over Last 12 Months

Lavers Delray Racquet Club I to IX	84 days
Delray Beach	59 days
Palm Beach	62 days