

Unit 16 - Magnolia & Annex

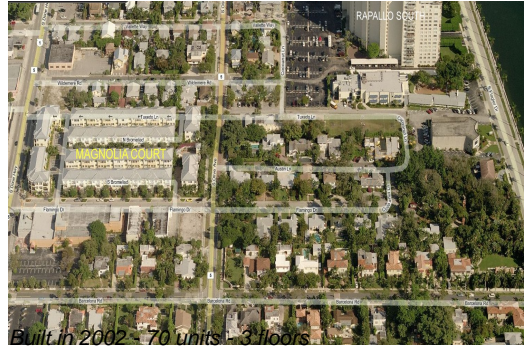
16 - 303-351 Flamingo Dr, West Palm Beach, FL, Palm Beach 33401



Unit Information

MLS Number: RX-11031626
 Status: Active
 Size: 2,265 Sq ft.
 Bedrooms: 3
 Full Bathrooms: 3
 Half Bathrooms: 1
 Parking Spaces: Garage - Attached
 View: Other
 Rental Price: \$8,000
 List PPSF: \$4
 Valuated Price: \$1,585,000
 Valuated PPSF: \$782

The above valuated price is a baseline figure that does not take into account any specific renovation, upgrade, split, merge, or deterioration of the unit.



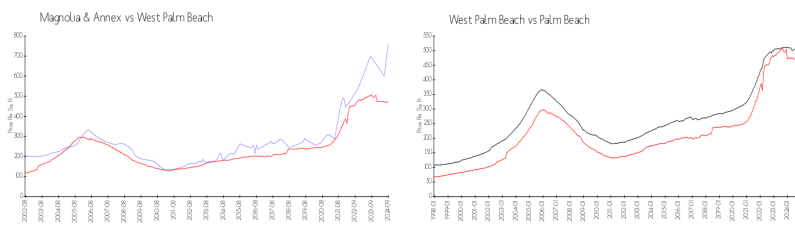
Building Information

Number of units: 70
 Number of active listings for rent: 1
 Number of active listings for sale: 5
 Building inventory for sale: 7%
 Number of sales over the last 12 months: 4
 Number of sales over the last 6 months: 3
 Number of sales over the last 3 months: 0

Building Association Information

Magnolia Court Homeowners Association, Inc 2328 S Congress Avenue # 1
 West Palm Beach, FL33406
 (561) 355-4497
 The Annex Condominium Association is managed by King's Management Services, Inc.
 (561) 627-0480

Market Information



Magnolia & Annex: \$756/sq. ft.
 West Palm Beach: \$470/sq. ft.
 West Palm Beach: \$470/sq. ft.
 Palm Beach: \$466/sq. ft.

Inventory for Sale

Magnolia & Annex: 7%
 West Palm Beach: 4%
 Palm Beach: 4%

Avg. Time to Close Over Last 12 Months

Magnolia & Annex: 84 days
 West Palm Beach: 56 days
 Palm Beach: 60 days