

Unit 4558 Mediterranean Cir - Trevi at the Gardens

4558 Mediterranean Cir - 4503-4683 Mediterranean Cir, Palm Beach Gardens, FL, Palm Beach 33418

Unit Information

MLS Number: RX-11033352
 Status: Active Under Contract
 Size: 2,251 Sq ft.
 Bedrooms: 3
 Full Bathrooms: 2
 Half Bathrooms: 1
 Parking Spaces: Garage - Attached
 View: Pool
 List Price: \$515,000
 List PPSF: \$229
 Valuated Price: \$515,000
 Valuated PPSF: \$317

The above valuated price is a baseline figure that does not take into account any specific renovation, upgrade, split, merge, or deterioration of the unit.

Building Information

Number of units: 75
 Number of active listings for rent: 0
 Number of active listings for sale: 5
 Building inventory for sale: 6%
 Number of sales over the last 12 months: 5
 Number of sales over the last 6 months: 3
 Number of sales over the last 3 months: 2

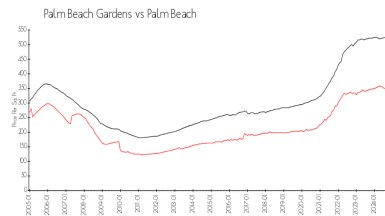
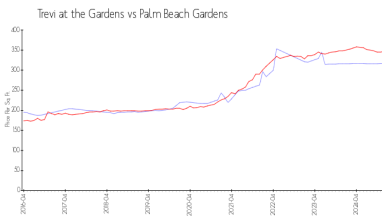
Building Association Information

Trevi at the Gardens HOA
 Address 4580 Mediterranean Cir
 Palm Beach Gardens, FL33418
 Phone +1 561-249-0489

Recent Sales

Unit #	Size	Closing Date	Sale Price	PPSF
	2,251 sq ft	Dec 2024	\$515,000	\$229
	2,251 sq ft	Nov 2024	\$490,000	\$218
	2,387 sq ft	Sep 2024	\$480,000	\$201
	2,227 sq ft	Jun 2024	\$549,900	\$247
	2,227 sq ft	May 2024	\$548,500	\$246

Market Information



Trevi at the Gardens: \$317/sq. ft.

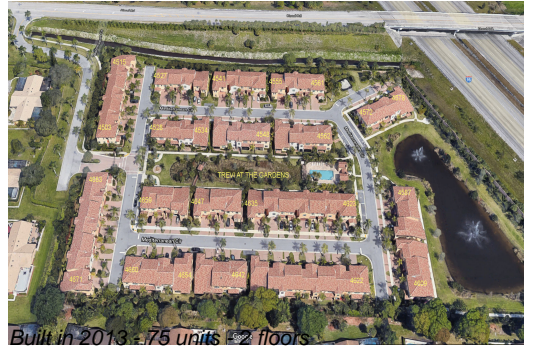
Palm Beach Gardens: \$347/sq. ft.

Palm Beach Gardens: \$347/sq. ft.

Palm Beach: \$465/sq. ft.

Inventory for Sale

Trevi at the Gardens: 7%
 Palm Beach Gardens: 3%
 Palm Beach: 4%



Avg. Time to Close Over Last 12 Months

Trevi at the Gardens	61 days
Palm Beach Gardens	53 days
Palm Beach	62 days