

Unit 3405 - Lavers Delray Racquet Club I to IX

3405 - 950 Egret Cir, Delray Beach, FL, Palm Beach 33444



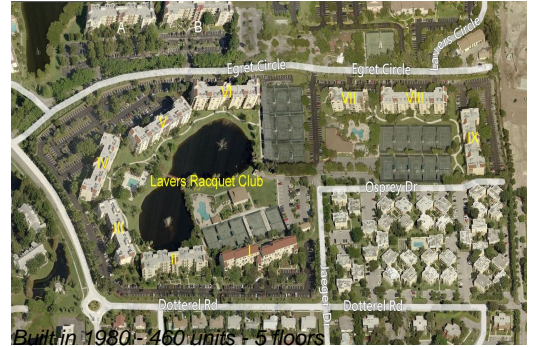
Unit Information

MLS Number: RX-11034106
 Status: Active
 Size: 1,175 Sq ft.
 Bedrooms: 2
 Full Bathrooms: 2
 Half Bathrooms: 0
 Parking Spaces: Assigned
 View: Garden, Lake
 Rental Price: \$5,000
 List PPSF: \$4
 Valuated Price: \$348,000
 Valuated PPSF: \$296

The above valuated price is a baseline figure that does not take into account any specific renovation, upgrade, split, merge, or deterioration of the unit.

Building Information

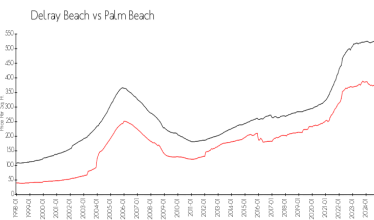
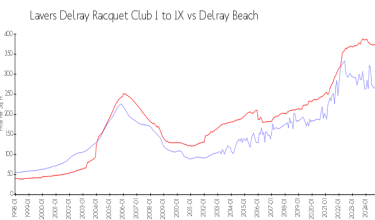
Number of units: 460
 Number of active listings for rent: 16
 Number of active listings for sale: 11
 Building inventory for sale: 2%
 Number of sales over the last 12 months: 20
 Number of sales over the last 6 months: 9
 Number of sales over the last 3 months: 7



Building Association Information

Lavers Of Delray Racquet Club,
 Delray Racquet Club Association, Inc
 610 Egret Circle
 Delray Beach, FL 33444-7930
 (561) 276-3792

Market Information



Lavers Delray Racquet Club I to IX:	\$285/sq. ft.	Delray Beach:	\$371/sq. ft.
Delray Beach:	\$371/sq. ft.	Palm Beach:	\$464/sq. ft.

Inventory for Sale

Lavers Delray Racquet Club I to IX: 2%
 Delray Beach: 3%
 Palm Beach: 4%

Avg. Time to Close Over Last 12 Months

Lavers Delray Racquet Club I to IX: 83 days
 Delray Beach: 59 days
 Palm Beach: 62 days