

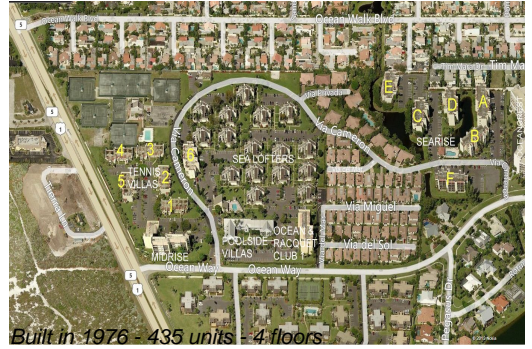
Unit Sea Lofters A-1 - Jupiter Ocean & Racquet Club

Sea Lofters A-1 - 1605 S US Hwy 1, Jupiter, FL, Palm Beach 33477

Unit Information

MLS Number:	RX-11034237
Status:	Active
Size:	740 Sq ft.
Bedrooms:	1
Full Bathrooms:	1
Half Bathrooms:	0
Parking Spaces:	Assigned, Guest
View:	Garden, Other
Rental Price:	\$4,150
List PPSF:	\$6
Valuated Price:	\$330,000
Valuated PPSF:	\$446

The above valuated price is a baseline figure that does not take into account any specific renovation, upgrade, split, merge, or deterioration of the unit.



Building Information

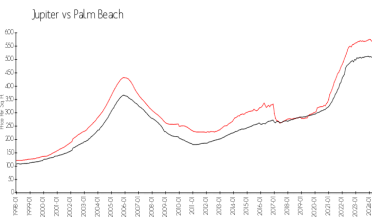
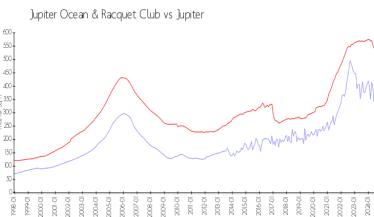
Number of units:	435
Number of active listings for rent:	0
Number of active listings for sale:	21
Building inventory for sale:	4%
Number of sales over the last 12 months:	17
Number of sales over the last 6 months:	7
Number of sales over the last 3 months:	3

Building Association Information

Jupiter Ocean & Racquet Club Association Address: 1605 U.S. 1,
Jupiter, FL 33477
Phone: (561) 747-5331

<http://jorcinc.net/site/>

Market Information



Jupiter Ocean & Racquet Club:	\$399/sq. ft.	Jupiter:	\$545/sq. ft.
Jupiter:	\$545/sq. ft.	Palm Beach:	\$466/sq. ft.

Inventory for Sale

Jupiter Ocean & Racquet Club	5%
Jupiter	3%
Palm Beach	4%

Avg. Time to Close Over Last 12 Months

Jupiter Ocean & Racquet Club	67 days
Jupiter	71 days
Palm Beach	60 days