

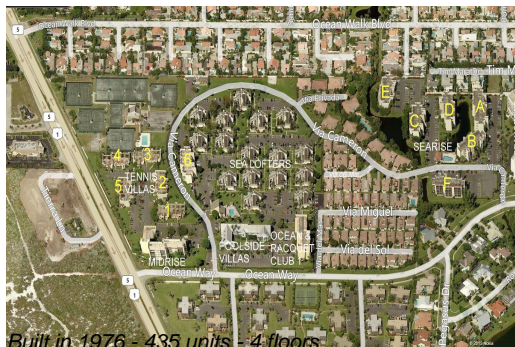
# Unit Sea Lofters F-5 - Jupiter Ocean & Racquet Club

Sea Lofters F-5 - 1605 S US Hwy 1, Jupiter, FL, Palm Beach 33477

## Unit Information

|                 |                |
|-----------------|----------------|
| MLS Number:     | RX-11036859    |
| Status:         | Active         |
| Size:           | 1,160 Sq ft.   |
| Bedrooms:       | 2              |
| Full Bathrooms: | 2              |
| Half Bathrooms: | 0              |
| Parking Spaces: | Assigned,Guest |
| View:           | Garden         |
| Rental Price:   | \$7,250        |
| List PPSF:      | \$6            |
| Valuated Price: | \$517,000      |
| Valuated PPSF:  | \$446          |

*The above valuated price is a baseline figure that does not take into account any specific renovation, upgrade, split, merge, or deterioration of the unit.*



## Building Information

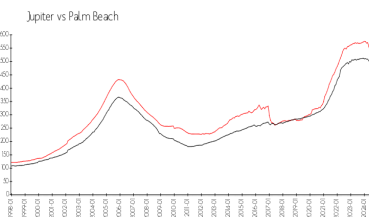
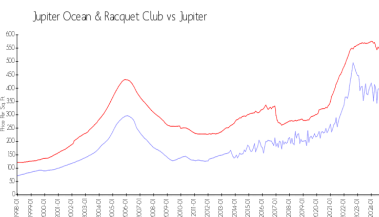
|  |     |
|--|-----|
| Number of units:                         | 435 |
| Number of active listings for rent:      | 0   |
| Number of active listings for sale:      | 21  |
| Building inventory for sale:             | 4%  |
| Number of sales over the last 12 months: | 17  |
| Number of sales over the last 6 months:  | 7   |
| Number of sales over the last 3 months:  | 3   |

## Building Association Information

Jupiter Ocean & Racquet Club Association Address: 1605 U.S. 1,  
Jupiter, FL 33477  
Phone:(561) 747-5331

<http://jorcinc.net/site/>

## Market Information



|                               |               |             |               |
|-------------------------------|---------------|-------------|---------------|
| Jupiter Ocean & Racquet Club: | \$399/sq. ft. | Jupiter:    | \$545/sq. ft. |
| Jupiter:                      | \$545/sq. ft. | Palm Beach: | \$466/sq. ft. |

## Inventory for Sale

|                              |    |
|------------------------------|----|
| Jupiter Ocean & Racquet Club | 5% |
| Jupiter                      | 3% |
| Palm Beach                   | 4% |

## Avg. Time to Close Over Last 12 Months

|                              |         |
|------------------------------|---------|
| Jupiter Ocean & Racquet Club | 67 days |
| Jupiter                      | 71 days |
| Palm Beach                   | 60 days |