

Unit 702 - Placido Mar

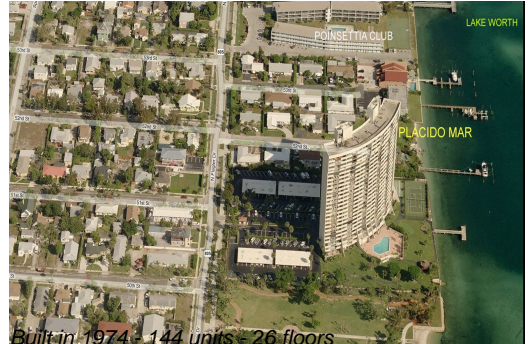
702 - 5200 N Flagler Dr, West Palm Beach, FL, Palm Beach 33407



Unit Information

MLS Number: RX-11037356
Status: Active
Size: 1,500 Sq ft.
Bedrooms: 2
Full Bathrooms: 2
Half Bathrooms: 0
Parking Spaces: Assigned, Deeded, Guest, Open, Vehicle Restrictions
View: Garden, Intracoastal, Ocean, Pool, Tennis
List Price: \$369,900
List PPSF: \$247
Valuated Price: \$370,000
Valuated PPSF: \$296

The above valuated price is a baseline figure that does not take into account any specific renovation, upgrade, split, merge, or deterioration of the unit.



Building Information

Number of units: 144
Number of active listings for rent: 0
Number of active listings for sale: 9
Building inventory for sale: 6%
Number of sales over the last 12 months: 3
Number of sales over the last 6 months: 2
Number of sales over the last 3 months: 2

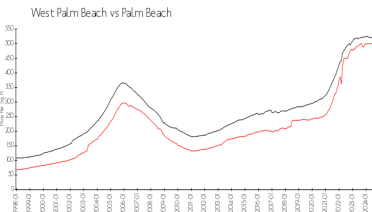
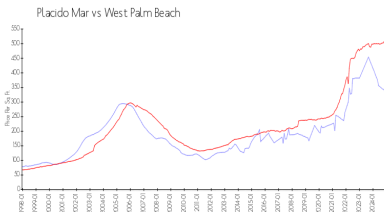
Building Association Information

Placido Mar Association, Inc
 5200 N Flagler Drive # 1505
 West Palm Beach, FL33407-2755
 (561) 842-3233

Recent Sales

| Unit # | Size | Closing Date | Sale Price | PPSF |
|--------|-------------|--------------|------------|-------|
| 401 | 1,250 sq ft | Dec 2024 | \$350,000 | \$280 |
| 1406 | 1,250 sq ft | Nov 2024 | \$404,000 | \$323 |
| 705 | 1,250 sq ft | Jun 2024 | \$415,000 | \$332 |

Market Information



Placido Mar: \$318/sq. ft. West Palm Beach: \$502/sq. ft.
 West Palm Beach: \$502/sq. ft. Palm Beach: \$465/sq. ft.

Inventory for Sale

Placido Mar: 6%
 West Palm Beach: 4%
 Palm Beach: 4%

Avg. Time to Close Over Last 12 Months

Placido Mar: 86 days
 West Palm Beach: 56 days
 Palm Beach: 62 days