

Unit 708 Mainsail Cir - Sea Colony

708 Mainsail Cir - 101-1909 Mainsail Cir, Jupiter, FL, Palm Beach 33477

Unit Information

MLS Number: RX-11037925
 Status: Active
 Size: 1,897 Sq ft.
 Bedrooms: 3
 Full Bathrooms: 3
 Half Bathrooms: 0
 Parking Spaces: Driveway, Garage - Detached
 View: Ocean
 List Price: \$1,149,000
 List PPSF: \$606
 Valuated Price: \$990,000
 Valuated PPSF: \$522

The above valuated price is a baseline figure that does not take into account any specific renovation, upgrade, split, merge, or deterioration of the unit.

Building Information

Number of units: 171
 Number of active listings for rent: 0
 Number of active listings for sale: 4
 Building inventory for sale: 2%
 Number of sales over the last 12 months: 5
 Number of sales over the last 6 months: 1
 Number of sales over the last 3 months: 1

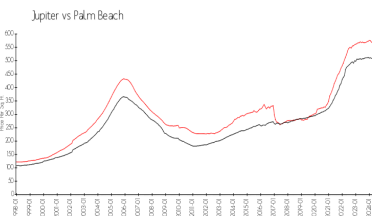
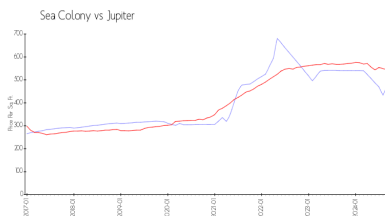
Building Association Information

Sea Colony Community Association
 Address: 1910 Mainsail Cir,
 Jupiter, FL 33477
 Phone: +1 561-743-5411

Recent Sales

Unit #	Size	Closing Date	Sale Price	PPSF
	1,894 sq ft	Aug 2024	\$770,000	\$407
1405	1,824 sq ft	Mar 2024	\$760,000	\$417
	1,624 sq ft	Mar 2024	\$827,000	\$509
1601	1,263 sq ft	Mar 2024	\$711,900	\$564
	1,624 sq ft	Jan 2024	\$950,000	\$585

Market Information



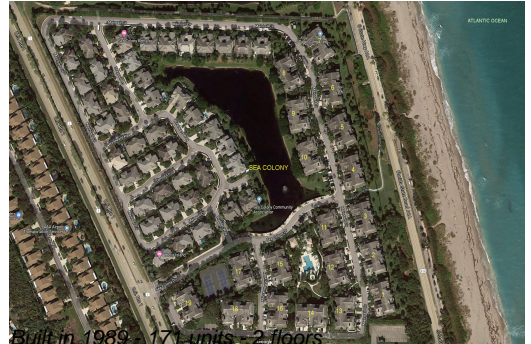
Sea Colony: \$477/sq. ft. Jupiter: \$545/sq. ft.
 Jupiter: \$545/sq. ft. Palm Beach: \$466/sq. ft.

Inventory for Sale

Sea Colony: 2%
 Jupiter: 3%
 Palm Beach: 4%

Avg. Time to Close Over Last 12 Months

Sea Colony: 55 days
 Jupiter: 71 days



Palm Beach

60 days