

Unit 1352 HIGH POINT WAY SE #D - High Point 6

1352 HIGH POINT WAY SE #D - 1277 High Point Blvd, Delray Beach, FL, Palm Beach 33445

Unit Information

MLS Number: RX-11038724
 Status: Active
 Size: 1,137 Sq ft.
 Bedrooms: 2
 Full Bathrooms: 2
 Half Bathrooms: 0
 Parking Spaces: Assigned, Guest, Vehicle Restrictions
 View: Garden, Other
 List Price: \$254,000
 List PPSF: \$223
 Valuated Price: \$185,000
 Valuated PPSF: \$163

The above valuated price is a baseline figure that does not take into account any specific renovation, upgrade, split, merge, or deterioration of the unit.

Building Information

Number of units: 292
 Number of active listings for rent: 0
 Number of active listings for sale: 5
 Building inventory for sale: 1%
 Number of sales over the last 12 months: 6
 Number of sales over the last 6 months: 5
 Number of sales over the last 3 months: 2

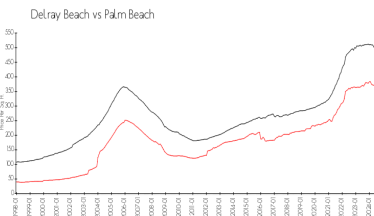
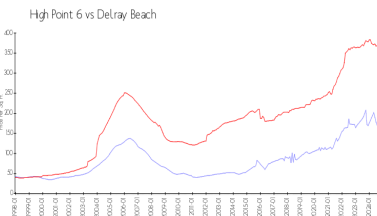
Building Association Information

High Point Of Delray Beach Condominium Association Sec 6 Inc
 1221 Club Drive W
 Delray Beach, FL 33445-2825
 (561) 496-4628

Recent Sales

Unit #	Size	Closing Date	Sale Price	PPSF
D	1,137 sq ft	Oct 2024	\$216,500	\$190
A	1,137 sq ft	Sep 2024	\$185,000	\$163
A	1,137 sq ft	Jun 2024	\$270,000	\$237
D	1,137 sq ft	Jun 2024	\$215,000	\$189
B	1,040 sq ft	Jun 2024	\$135,000	\$130

Market Information

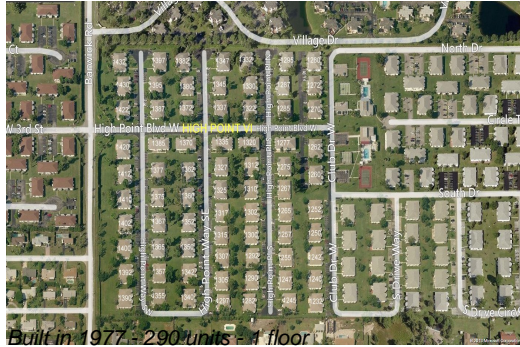


High Point 6: \$163/sq. ft. Delray Beach: \$365/sq. ft.
 Delray Beach: \$365/sq. ft. Palm Beach: \$466/sq. ft.

Inventory for Sale

High Point 6: 2%
 Delray Beach: 3%
 Palm Beach: 4%

Avg. Time to Close Over Last 12 Months



High Point 6
Delray Beach
Palm Beach

42 days
56 days
60 days