

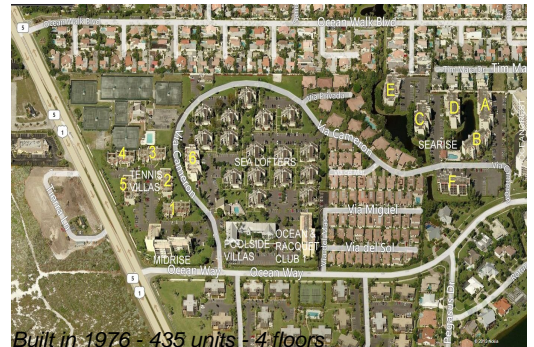
# Unit Sea Lofters H-1 - Jupiter Ocean & Racquet Club

Sea Lofters H-1 - 1605 S US Hwy 1, Jupiter, FL, Palm Beach 33477

## Unit Information

MLS Number:	RX-11046772
Status:	Active
Size:	1,160 Sq ft.
Bedrooms:	2
Full Bathrooms:	2
Half Bathrooms:	0
Parking Spaces:	Assigned
View:	Garden
Rental Price:	\$3,350
List PPSF:	\$3
Valuated Price:	\$408,000
Valuated PPSF:	\$352

*The above valuated price is a baseline figure that does not take into account any specific renovation, upgrade, split, merge, or deterioration of the unit.*



## Building Information

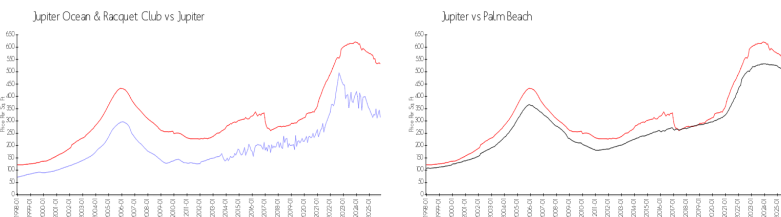
Number of units:	435
Number of active listings for rent:	0
Number of active listings for sale:	17
Building inventory for sale:	3%
Number of sales over the last 12 months:	23
Number of sales over the last 6 months:	14
Number of sales over the last 3 months:	7

## Building Association Information

Jupiter Ocean & Racquet Club AssociationAddress: 1605 U.S. 1,  
Jupiter, FL 33477  
Phone:(561) 747-5331

<https://jorcinc.net/site/>

## Market Information



Jupiter Ocean & Racquet Club:	\$315/sq. ft.	Jupiter:	\$532/sq. ft.
Jupiter:	\$532/sq. ft.	Palm Beach:	\$453/sq. ft.

## Inventory for Sale

Jupiter Ocean & Racquet Club	4%
Jupiter	3%
Palm Beach	3%

## Avg. Time to Close Over Last 12 Months

Jupiter Ocean & Racquet Club	96 days
Jupiter	85 days
Palm Beach	77 days