

Unit 16151 W Bay Dr # 161 - West Bay at Jonathan's Landing

16151 W Bay Dr # 161 - 3911-3971 Schooner Pointe Dr, Jupiter, FL, Palm Beach 33477

Unit Information

MLS Number:	RX-11055153
Status:	Active
Size:	1,478 Sq ft.
Bedrooms:	2
Full Bathrooms:	2
Half Bathrooms:	0
Parking Spaces:	2+ Spaces,Garage - Attached
View:	
Rental Price:	\$5,500
List PPSF:	\$4
Valuated Price:	\$466,000
Valuated PPSF:	\$315

The above valuated price is a baseline figure that does not take into account any specific renovation, upgrade, split, merge, or deterioration of the unit.

Building Information

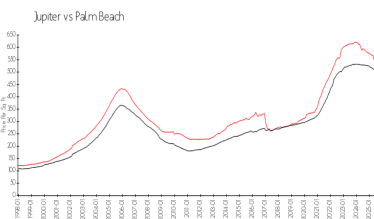
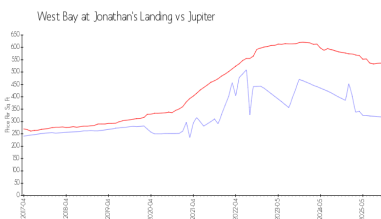
Number of units:	130
Number of active listings for rent:	0
Number of active listings for sale:	3
Building inventory for sale:	2%
Number of sales over the last 12 months:	8
Number of sales over the last 6 months:	3
Number of sales over the last 3 months:	1

Building Association Information

Jonathan's Landing POA
3755 Barrow Island Road
Jupiter, FL 33477
Office Phone: 561-743-2032
Fax: 561-743-2062
Email: admin@jlpoa.com

<https://jonathanslandingpoa.com/the-villages/west-bay>

Market Information



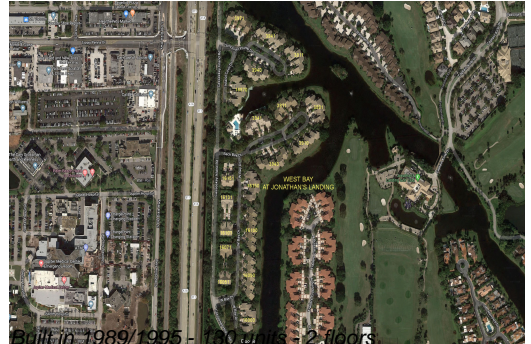
West Bay at Jonathan's Landing:	\$317/sq. ft.	Jupiter:	\$532/sq. ft.
Jupiter:	\$532/sq. ft.	Palm Beach:	\$453/sq. ft.

Inventory for Sale

West Bay at Jonathan's Landing	2%
Jupiter	3%
Palm Beach	3%

Avg. Time to Close Over Last 12 Months

West Bay at Jonathan's Landing	89 days
Jupiter	85 days



Palm Beach

77 days