

Unit 1906 Mainsail Cir - Sea Colony

1906 Mainsail Cir - 101-1909 Mainsail Cir, Jupiter, FL, Palm Beach 33477

Unit Information

MLS Number:	RX-11067568
Status:	Active
Size:	1,624 Sq ft.
Bedrooms:	3
Full Bathrooms:	2
Half Bathrooms:	0
Parking Spaces:	Driveway,Garage - Attached,Guest,Vehicle Restrictions
View:	Garden,Tennis
Rental Price:	\$8,500
List PPSF:	\$5
Valuated Price:	\$930,000
Valuated PPSF:	\$573

The above valuated price is a baseline figure that does not take into account any specific renovation, upgrade, split, merge, or deterioration of the unit.

Building Information

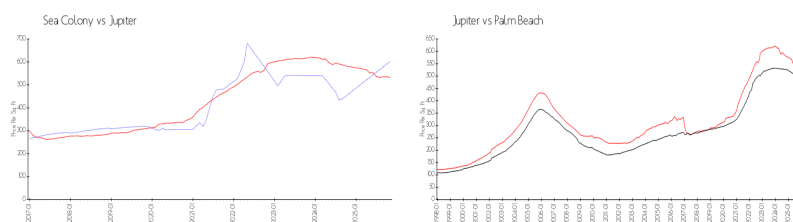
Number of units:	171
Number of active listings for rent:	0
Number of active listings for sale:	6
Building inventory for sale:	3%
Number of sales over the last 12 months:	6
Number of sales over the last 6 months:	2
Number of sales over the last 3 months:	1

Building Association Information

Sea Colony Community Association
Address: 1910 Mainsail Cir,
Jupiter, FL 33477
Phone: +1 561-743-5411

<https://>

Market Information



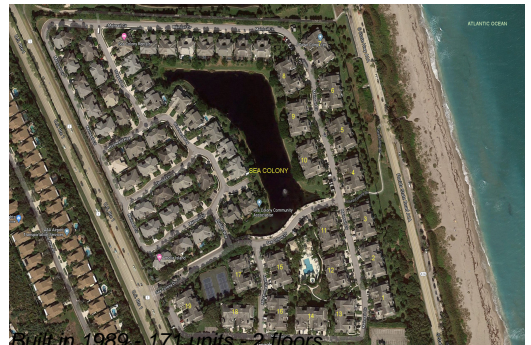
Sea Colony:	\$602/sq. ft.	Jupiter:	\$532/sq. ft.
Jupiter:	\$532/sq. ft.	Palm Beach:	\$453/sq. ft.

Inventory for Sale

Sea Colony	4%
Jupiter	3%
Palm Beach	3%

Avg. Time to Close Over Last 12 Months

Sea Colony	93 days
Jupiter	85 days
Palm Beach	77 days



Built in 1989 - 171 units - 2 floors