

Unit 9209 - Lavers Delray Racquet Club I to IX

9209 - 950 Egret Cir, Delray Beach, FL, Palm Beach 33444

Unit Information

MLS Number:	RX-11076436
Status:	Active
Size:	1,175 Sq ft.
Bedrooms:	2
Full Bathrooms:	2
Half Bathrooms:	0
Parking Spaces:	Assigned,Guest
View:	Garden,Tennis
List Price:	\$329,900
List PPSF:	\$281
Valuated Price:	\$291,000
Valuated PPSF:	\$248

The above valuated price is a baseline figure that does not take into account any specific renovation, upgrade, split, merge, or deterioration of the unit.

Building Information

Number of units:	460
Number of active listings for rent:	16
Number of active listings for sale:	10
Building inventory for sale:	2%
Number of sales over the last 12 months:	19
Number of sales over the last 6 months:	6
Number of sales over the last 3 months:	1

Building Association Information

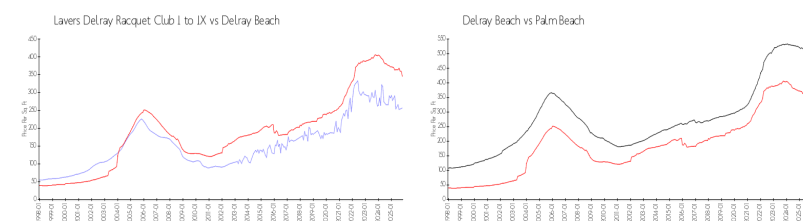
Lavers Of Delray Racquet Club,
Delray Racquet Club Association, Inc
610 Egret Circle
Delray Beach, FL 33444-7930
(561) 276-3792

<https://>

Recent Sales

Unit #	Size	Closing Date	Sale Price	PPSF
3103	1,175 sq ft	Oct 2025	\$260,000	\$221
8203	1,175 sq ft	Aug 2025	\$242,000	\$206
5409	1,175 sq ft	Aug 2025	\$250,000	\$213
6207	1,175 sq ft	Aug 2025	\$275,000	\$234
2108	1,175 sq ft	Aug 2025	\$415,000	\$353

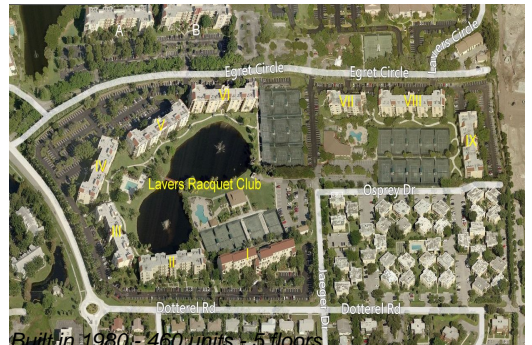
Market Information



Lavers Delray Racquet Club I to IX:	\$257/sq. ft.	Delray Beach:	\$346/sq. ft.
Delray Beach:	\$346/sq. ft.	Palm Beach:	\$453/sq. ft.

Inventory for Sale

Lavers Delray Racquet Club I to IX	2%
Delray Beach	2%
Palm Beach	2%



Avg. Time to Close Over Last 12 Months

Lavers Delray Racquet Club I to IX	82 days
Delray Beach	76 days
Palm Beach	77 days