

# Unit 125 Galicia Way # 15-209 - Somerset at Abacoa

125 Galicia Way # 15-209 - 224-276 Murcia Dr, Jupiter, FL, Palm Beach 33458

## Unit Information

MLS Number: RX-11077434  
 Status: Active  
 Size: 1,344 Sq ft.  
 Bedrooms: 2  
 Full Bathrooms: 2  
 Half Bathrooms: 1  
 Parking Spaces: Open, Street  
 View: Preserve  
 List Price: \$370,000  
 List PPSF: \$275  
 Valuated Price: \$379,000  
 Valuated PPSF: \$282

*The above valuated price is a baseline figure that does not take into account any specific renovation, upgrade, split, merge, or deterioration of the unit.*

## Building Information

Number of units: 265  
 Number of active listings for rent: 0  
 Number of active listings for sale: 7  
 Building inventory for sale: 2%  
 Number of sales over the last 12 months: 16  
 Number of sales over the last 6 months: 8  
 Number of sales over the last 3 months: 5

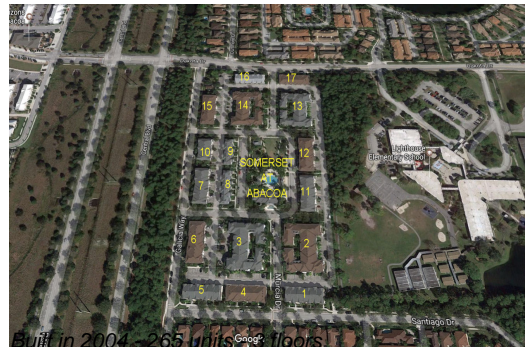
## Building Association Information

Somerset Property Management:  
 GRS Management Associates, Inc  
 Phone: (561) 641-8554

Property Manager: Leslie Susich

Onsite: (561) 625-1609

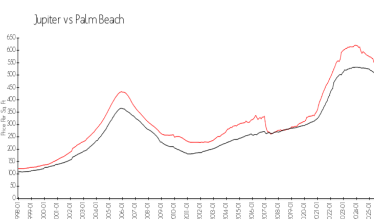
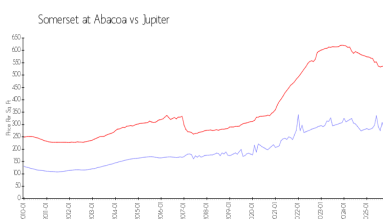
<https://www.grsmgt.com>



## Recent Sales

Unit #	Size	Closing Date	Sale Price	PPSF
201	1,211 sq ft	Dec 2025	\$365,000	\$301
210	849 sq ft	Nov 2025	\$305,000	\$359
202	1,457 sq ft	Oct 2025	\$438,000	\$301
201	1,457 sq ft	Oct 2025	\$400,000	\$275
102	1,384 sq ft	Sep 2025	\$422,500	\$305

## Market Information



Somerset at Abacoa: \$282/sq. ft.  
 Jupiter: \$532/sq. ft.

Jupiter: \$532/sq. ft.  
 Palm Beach: \$452/sq. ft.

## Inventory for Sale

Somerset at Abacoa	3%
Jupiter	3%
Palm Beach	3%

### **Avg. Time to Close Over Last 12 Months**

Somerset at Abacoa	72 days
Jupiter	85 days
Palm Beach	77 days