

Unit Sea Rise F-204 - Jupiter Ocean & Racquet Club

Sea Rise F-204 - 1605 S US Hwy 1, Jupiter, FL, Palm Beach 33477

Unit Information

MLS Number:	RX-11091039
Status:	Active
Size:	860 Sq ft.
Bedrooms:	1
Full Bathrooms:	1
Half Bathrooms:	1
Parking Spaces:	Assigned,Guest,Vehicle Restrictions
View:	Canal,Garden
Rental Price:	\$2,200
List PPSF:	\$3
Valuated Price:	\$283,000
Valuated PPSF:	\$329

The above valuated price is a baseline figure that does not take into account any specific renovation, upgrade, split, merge, or deterioration of the unit.

Building Information

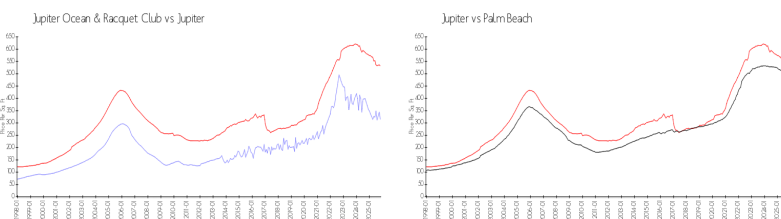
Number of units:	435
Number of active listings for rent:	0
Number of active listings for sale:	16
Building inventory for sale:	3%
Number of sales over the last 12 months:	23
Number of sales over the last 6 months:	13
Number of sales over the last 3 months:	7

Building Association Information

Jupiter Ocean & Racquet Club AssociationAddress: 1605 U.S. 1,
Jupiter, FL 33477
Phone:(561) 747-5331

<https://jorcinc.net/site/>

Market Information



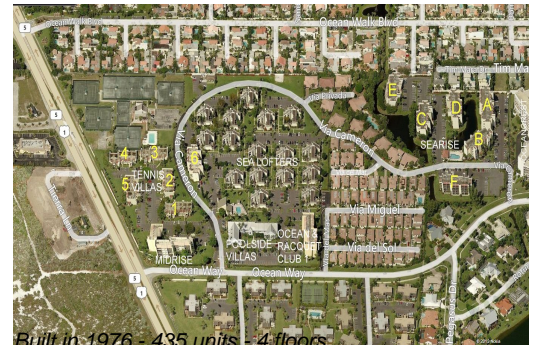
Jupiter Ocean & Racquet Club:	\$315/sq. ft.	Jupiter:	\$532/sq. ft.
Jupiter:	\$532/sq. ft.	Palm Beach:	\$452/sq. ft.

Inventory for Sale

Jupiter Ocean & Racquet Club	4%
Jupiter	3%
Palm Beach	3%

Avg. Time to Close Over Last 12 Months

Jupiter Ocean & Racquet Club	98 days
Jupiter	86 days
Palm Beach	77 days



Built in 1976 - 435 units - 4 floors