

Unit 6 Lexington Ln E # C - Lexington Green

6 Lexington Ln E # C - 16-25 Lexington Ln W, Palm Beach Gardens, FL, Palm Beach 33418

Unit Information

| | |
|-----------------|----------------------------------|
| MLS Number: | RX-11095174 |
| Status: | Active |
| Size: | 1,025 Sq ft. |
| Bedrooms: | 2 |
| Full Bathrooms: | 1 |
| Half Bathrooms: | 0 |
| Parking Spaces: | Driveway,Garage - Attached,Guest |
| View: | Pond |
| List Price: | \$388,470 |
| List PPSF: | \$379 |
| Valuated Price: | \$297,000 |
| Valuated PPSF: | \$290 |

The above valuated price is a baseline figure that does not take into account any specific renovation, upgrade, split, merge, or deterioration of the unit.

Building Information

| | |
|--|-----|
| Number of units: | 192 |
| Number of active listings for rent: | 0 |
| Number of active listings for sale: | 2 |
| Building inventory for sale: | 1% |
| Number of sales over the last 12 months: | 9 |
| Number of sales over the last 6 months: | 7 |
| Number of sales over the last 3 months: | 6 |

Building Association Information

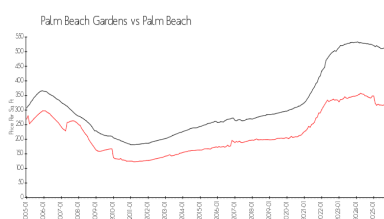
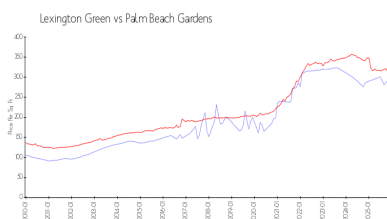
Lexington Green Condo Assn
300 Avenue Of Champions
Palm Beach Gardens, FL 33418
Phone: (954) 924-3071

<https://>

Recent Sales

| Unit # | Size | Closing Date | Sale Price | PPSF |
|--------|-------------|--------------|------------|-------|
| C | 1,025 sq ft | Nov 2025 | \$310,000 | \$302 |
| H | 1,600 sq ft | Nov 2025 | \$446,000 | \$279 |
| B | 1,025 sq ft | Nov 2025 | \$270,000 | \$263 |
| B | 1,025 sq ft | Oct 2025 | \$345,000 | \$337 |
| A | 1,025 sq ft | Oct 2025 | \$375,000 | \$366 |

Market Information



Lexington Green: \$292/sq. ft.

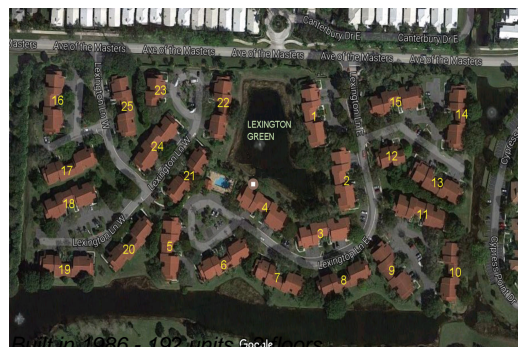
Palm Beach Gardens: \$312/sq. ft.

Palm Beach Gardens: \$312/sq. ft.

Palm Beach: \$453/sq. ft.

Inventory for Sale

| | |
|--------------------|----|
| Lexington Green | 1% |
| Palm Beach Gardens | 2% |



| | |
|------------|----|
| Palm Beach | 2% |
|------------|----|

Avg. Time to Close Over Last 12 Months

| | |
|--------------------|---------|
| Lexington Green | 73 days |
| Palm Beach Gardens | 66 days |
| Palm Beach | 77 days |