

Unit S-202 - Ocean Royale (North & South)

S-202 - 700 Ocean Royale Wy, Juno Beach, FL, Palm Beach 33408

Unit Information

MLS Number:	RX-11100356
Status:	Active
Size:	2,643 Sq ft.
Bedrooms:	3
Full Bathrooms:	2
Half Bathrooms:	1
Parking Spaces:	2+ Spaces,Garage - Building,Guest
View:	Garden,Ocean,Pool
List Price:	\$1,600,000
List PPSF:	\$605
Valuated Price:	\$1,800,000
Valuated PPSF:	\$681

The above valuated price is a baseline figure that does not take into account any specific renovation, upgrade, split, merge, or deterioration of the unit.

Building Information

Number of units:	119
Number of active listings for rent:	1
Number of active listings for sale:	3
Building inventory for sale:	2%
Number of sales over the last 12 months:	2
Number of sales over the last 6 months:	2
Number of sales over the last 3 months:	0

Building Association Information

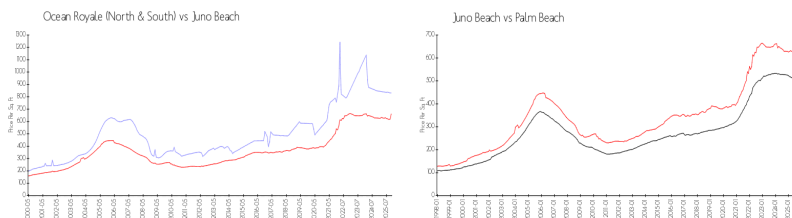
Ocean Royale Condo
700 Ocean Royale Way
Juno Beach, FL33408-1323
(561) 493-8630

https://

Recent Sales

Unit #	Size	Closing Date	Sale Price	PPSF
401	2,936 sq ft	Aug 2025	\$3,200,000	\$1,090
1201	2,936 sq ft	Aug 2025	\$2,750,000	\$937

Market Information



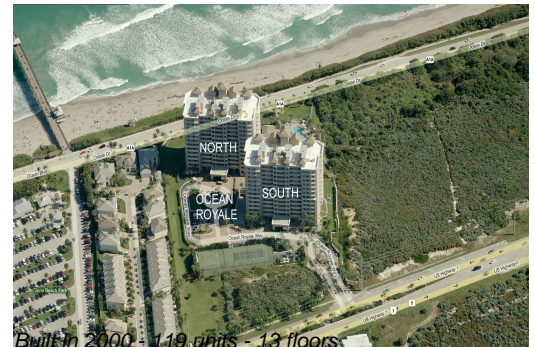
Ocean Royale (North & South):	\$831/sq. ft.	Juno Beach:	\$663/sq. ft.
Juno Beach:	\$663/sq. ft.	Palm Beach:	\$452/sq. ft.

Inventory for Sale

Ocean Royale (North & South)	3%
Juno Beach	3%
Palm Beach	3%

Avg. Time to Close Over Last 12 Months

Ocean Royale (North & South)	53 days
------------------------------	---------



Juno Beach
Palm Beach

86 days
77 days