

# Unit 9309 - Lavers Delray Racquet Club I to IX

9309 - 950 Egret Cir, Delray Beach, FL, Palm Beach 33444

## Unit Information

MLS Number:	RX-11101117
Status:	Active
Size:	1,175 Sq ft.
Bedrooms:	2
Full Bathrooms:	2
Half Bathrooms:	0
Parking Spaces:	Assigned
View:	Garden
List Price:	\$279,000
List PPSF:	\$237
Valuated Price:	\$294,000
Valuated PPSF:	\$250

*The above valuated price is a baseline figure that does not take into account any specific renovation, upgrade, split, merge, or deterioration of the unit.*

## Building Information

Number of units:	460
Number of active listings for rent:	16
Number of active listings for sale:	10
Building inventory for sale:	2%
Number of sales over the last 12 months:	19
Number of sales over the last 6 months:	6
Number of sales over the last 3 months:	1

## Building Association Information

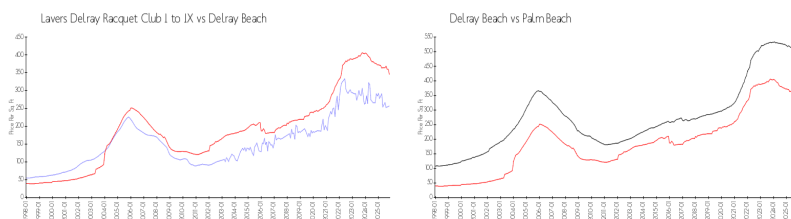
Lavers Of Delray Racquet Club,  
Delray Racquet Club Association, Inc  
610 Egret Circle  
Delray Beach, FL 33444-7930  
(561) 276-3792

<https://>

## Recent Sales

Unit #	Size	Closing Date	Sale Price	PPSF
3103	1,175 sq ft	Oct 2025	\$260,000	\$221
8203	1,175 sq ft	Aug 2025	\$242,000	\$206
5409	1,175 sq ft	Aug 2025	\$250,000	\$213
6207	1,175 sq ft	Aug 2025	\$275,000	\$234
2108	1,175 sq ft	Aug 2025	\$415,000	\$353

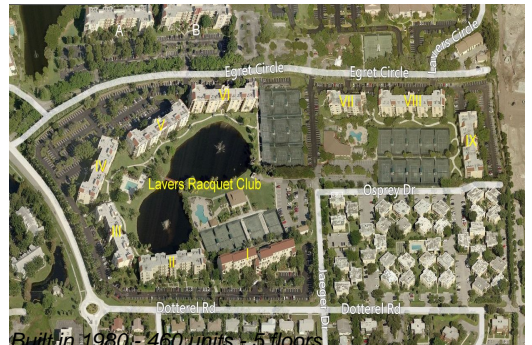
## Market Information



Lavers Delray Racquet Club I to IX:	\$257/sq. ft.	Delray Beach:	\$346/sq. ft.
Delray Beach:	\$346/sq. ft.	Palm Beach:	\$453/sq. ft.

## Inventory for Sale

Lavers Delray Racquet Club I to IX	2%
Delray Beach	2%
Palm Beach	2%



### **Avg. Time to Close Over Last 12 Months**

Lavers Delray Racquet Club I to IX	82 days
Delray Beach	76 days
Palm Beach	77 days