

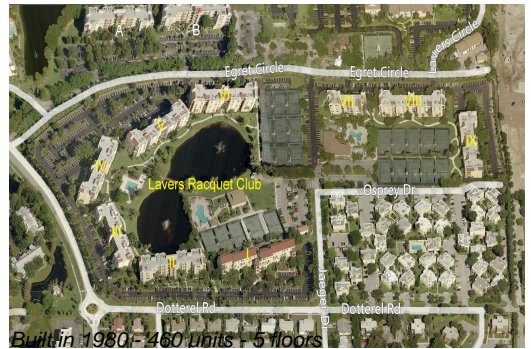
# Unit 7401 - Lavers Delray Racquet Club I to IX

7401 - 950 Egret Cir, Delray Beach, FL, Palm Beach 33444

## Unit Information

MLS Number:	RX-11109225
Status:	Active
Size:	1,175 Sq ft.
Bedrooms:	2
Full Bathrooms:	2
Half Bathrooms:	0
Parking Spaces:	Assigned,Guest,Vehicle Restrictions
View:	Pool,Tennis
Rental Price:	\$5,200
List PPSF:	\$4
Valuated Price:	\$290,000
Valuated PPSF:	\$247

*The above valuated price is a baseline figure that does not take into account any specific renovation, upgrade, split, merge, or deterioration of the unit.*



## Building Information

Number of units:	460
Number of active listings for rent:	16
Number of active listings for sale:	15
Building inventory for sale:	3%
Number of sales over the last 12 months:	18
Number of sales over the last 6 months:	6
Number of sales over the last 3 months:	1

## Building Association Information

Lavers Of Delray Racquet Club,  
Delray Racquet Club Association, Inc  
610 Egret Circle  
Delray Beach, FL 33444-7930  
(561) 276-3792

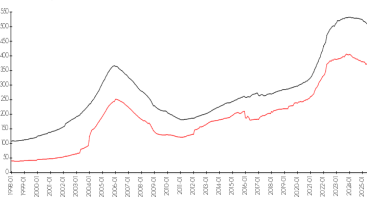
<https://>

## Market Information

Lavers Delray Racquet Club I to IX vs Delray Beach



Delray Beach vs Palm Beach



Lavers Delray Racquet Club I to IX:	\$250/sq. ft.	Delray Beach:	\$353/sq. ft.
Delray Beach:	\$353/sq. ft.	Palm Beach:	\$452/sq. ft.

## Inventory for Sale

Lavers Delray Racquet Club I to IX	3%
Delray Beach	3%
Palm Beach	3%

## Avg. Time to Close Over Last 12 Months

Lavers Delray Racquet Club I to IX	83 days
Delray Beach	75 days
Palm Beach	77 days