

# Unit 1850 N Congress Ave # 209 - Presidential Golfview

1850 N Congress Ave # 209 - 1700 N Congress Ave, West Palm Beach, FL, Palm Beach 33401

## Unit Information

MLS Number: RX-11111074  
Status: Active  
Size: 775 Sq ft.  
Bedrooms: 1  
Full Bathrooms: 1  
Half Bathrooms: 0  
Parking Spaces:  
View:  
Rental Price: \$1,500  
List PPSF: \$2  
Valuated Price: \$126,000  
Valuated PPSF: \$163

*The above valuated price is a baseline figure that does not take into account any specific renovation, upgrade, split, merge, or deterioration of the unit.*

## Building Information

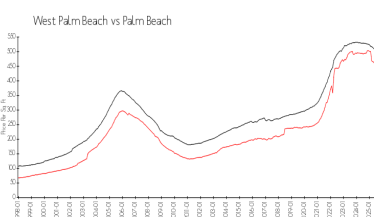
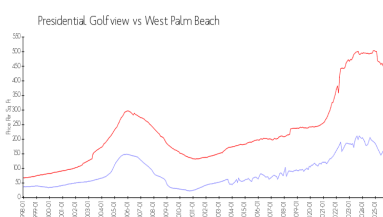
Number of units: 436  
Number of active listings for rent: 0  
Number of active listings for sale: 19  
Building inventory for sale: 4%  
Number of sales over the last 12 months: 7  
Number of sales over the last 6 months: 5  
Number of sales over the last 3 months: 4

## Building Association Information

Presidential Golfview Condo  
West Palm Beach, FL 33401  
1700 N Congress Ave Apt A,  
(561) 684-7725  
1720 N Congress Ave Apt A,  
(561) 471-0981  
1750 N Congress Ave,  
(561) 688-0892  
1820 N Congress Ave Apt A,  
(561) 686-6342  
1850 N Congress Ave,  
(561) 686-1077  
1860 N Congress Ave  
(561) 686-4948  
1900 S Congress Ave Ste A,  
(561) 683-7512  
2000 N Congress Ave # A,  
(561) 684-1531

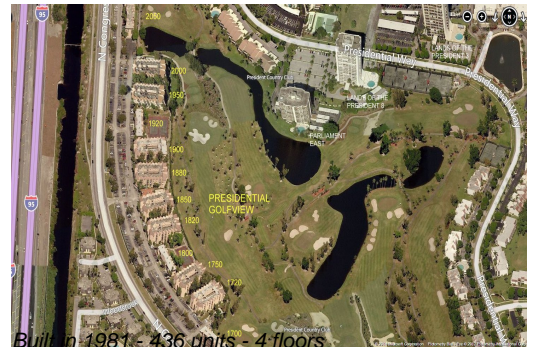
<https://>

## Market Information



Presidential  
Golfview: \$164/sq. ft.

West Palm Beach: \$459/sq. ft.



West Palm Beach:   \$459/sq. ft.                     Palm Beach:           \$452/sq. ft.

**Inventory for Sale**

Presidential Golfview	4%
West Palm Beach	3%
Palm Beach	3%

**Avg. Time to Close Over Last 12 Months**

Presidential Golfview	44 days
West Palm Beach	70 days
Palm Beach	77 days