

Unit 401 - City Walk Pineapple Grove

401 - 200 NE 2 Av, Delray Beach, FL, Palm Beach 33444

Unit Information

MLS Number: RX-11116350
 Status: Active
 Size: 1,004 Sq ft.
 Bedrooms: 1
 Full Bathrooms: 1
 Half Bathrooms: 0
 Parking Spaces: Assigned, Deeded, Guest, Under Building, Vehicle Restrictions
 View: City
 List Price: \$749,000
 List PPSF: \$746
 Valuated Price: \$574,000
 Valuated PPSF: \$572

The above valuated price is a baseline figure that does not take into account any specific renovation, upgrade, split, merge, or deterioration of the unit.

Building Information

Number of units: 40
 Number of active listings for rent: 3
 Number of active listings for sale: 4
 Building inventory for sale: 10%
 Number of sales over the last 12 months: 3
 Number of sales over the last 6 months: 1
 Number of sales over the last 3 months: 0

Building Association Information

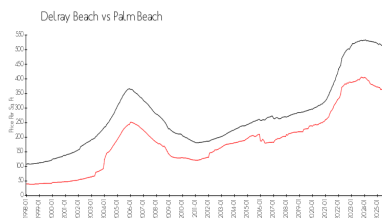
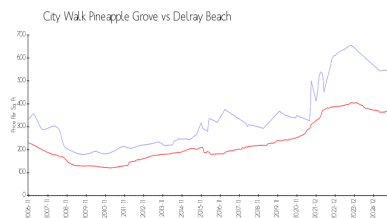
City Walk At Pineapple Grove
 200 NE 2nd Ave, Delray Beach, FL 33444
 (561) 266-5970

<https://>

Recent Sales

Unit #	Size	Closing Date	Sale Price	PPSF
403	1,146 sq ft	Apr 2025	\$540,000	\$471
410	1,531 sq ft	Apr 2025	\$915,000	\$598

Market Information



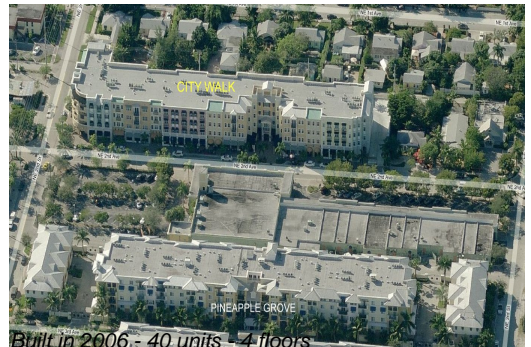
City Walk Pineapple Grove:	\$550/sq. ft.	Delray Beach:	\$346/sq. ft.
Delray Beach:	\$346/sq. ft.	Palm Beach:	\$453/sq. ft.

Inventory for Sale

City Walk Pineapple Grove	10%
Delray Beach	2%
Palm Beach	2%

Avg. Time to Close Over Last 12 Months

City Walk Pineapple Grove	74 days
---------------------------	---------



Delray Beach
Palm Beach

76 days
77 days